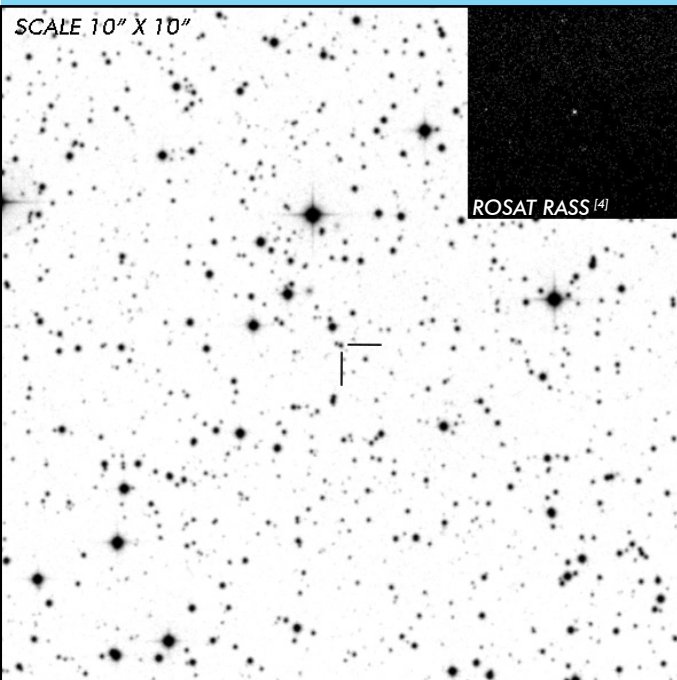


J0706+0325

Short Period Polar

OBSERVATION DATA



OTHER NAME(S): SWIFT J0706.8+0325; PPMXL 3189652360374206258			
FOUND: ROSAT RASS			
RIGHT ASCENSION ^[1]	07 ^h 06 ^m 48.92 ^s	DECLINATION ^[1]	+03° 24' 47.33"
PARALLAXES (mas) ^[1]	4.73 ± 0.11	DISTANCE (pc) ^[2]	210.4
DISTANCE BOUNDARIES (pc) ^[2]		Lower = 205.6	Upper = 215.4
MAGNETIC FIELD (MG)			
...			
ORBITAL PERIOD & SPIN PERIOD ^[3]			
DAYS	HOURS	MINUTES	
0.0710	1.7042	102.25	
OPTICAL (CRTS MAGNITUDE)			
...
OTHER INFORMATION			

SUMMARY

EXTERNAL LINKS



REFERENCES

- ¹ Gaia Collaboration et al. (2018b): Summary of the contents and survey properties
- ² Bailer-Jones et al. 2018, "Estimating Distance from Parallaxes, IV. Distances to 1.33 Billion Stars in Gaia Data Release 2", *ApJ*, Vol. 156, 58
- ³ BERNARDINI F. et al. 2017, "Broad-band characteristics of seven new hard X-ray selected cataclysmic variables.", *MNRAS* 470, 4815
- ⁴ HEASARC Skyview: ROSAT All-Sky
- ⁵