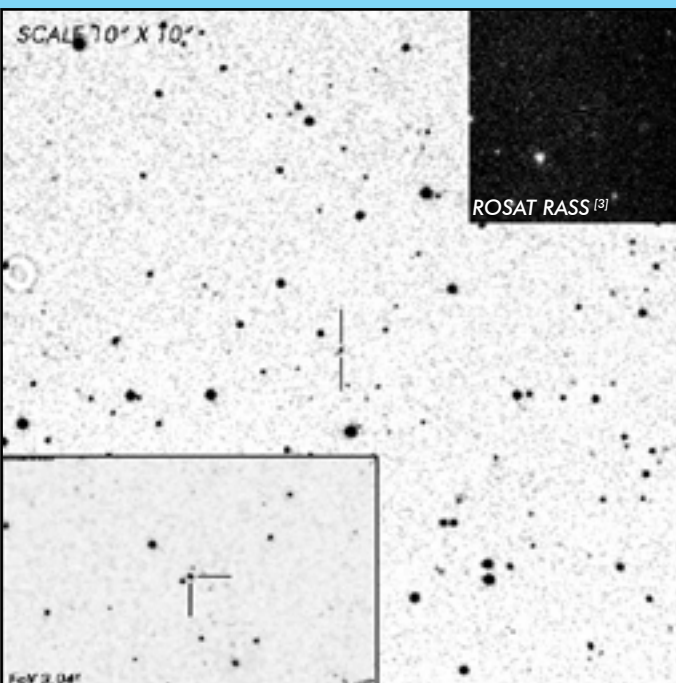




# J1525-0326 Short Period Polar

## OBSERVATION DATA



<b>OTHER NAME(S):</b> 1RXS J152506.9-032647; PM J15251-0326			
<b>FOUND:</b> ROSAT 1999			
<b>RIGHT ASCENSION</b> <sup>[1]</sup>	15 <sup>h</sup> 25 <sup>m</sup> 06.87 <sup>s</sup>	<b>DECLINATION</b> <sup>[1]</sup>	-03° 26' 54.03"
<b>PARALLAXES (mas)</b> <sup>[1]</sup>	4.11 ± 0.07	<b>DISTANCE (pc)</b> <sup>[2]</sup>	242.0
<b>DISTANCE BOUNDARIES (pc)</b> <sup>[2]</sup>		Lower = 237.72	Upper = 246.50
<b>MAGNETIC FIELD (MG)</b>		...	...
<b>ORBITAL PERIOD &amp; SPIN PERIOD</b>			
<b>DAYS</b>	<b>HOURS</b>	<b>MINUTES</b>	
0.06463	1.5511	93.064	
<b>OPTICAL (CRTS MAGNITUDE)</b>			
...	...	...	...
<b>OTHER INFORMATION</b>			

## SUMMARY

## EXTERNAL LINKS



## REFERENCES

- <sup>1</sup> [Gaia Collaboration et al. \(2018b\): Summary of the contents and survey properties](#)
- <sup>2</sup> [Bailor-Jones et al. 2018, "Estimating Distance from Parallaxes, IV. Distances to 1.3 Billion Stars in Gaia Data Release 2", ApJ, Vol. 156, 58](#)
- <sup>3</sup> [HEASARC Skyview: ROSAT All-Sky](#)
- <sup>4</sup>