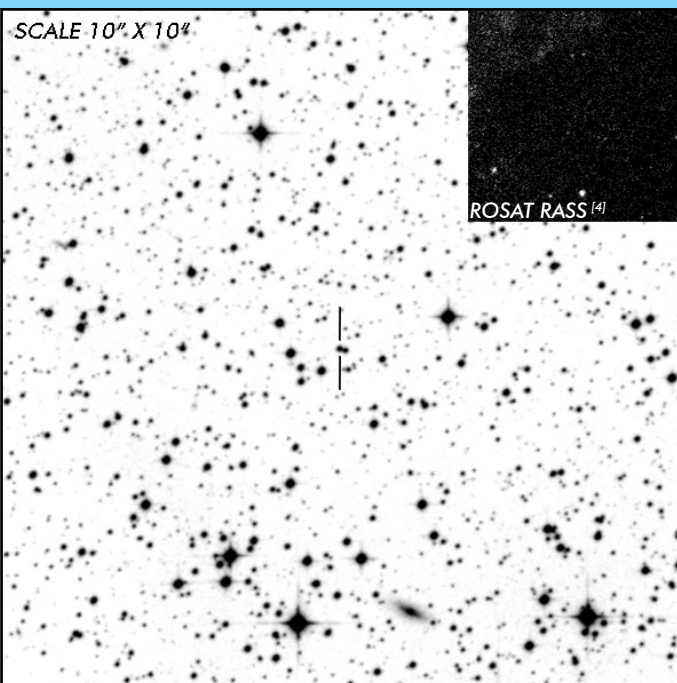


WX Pyx

Long Period Intermediate Polar

OBSERVATION DATA



OTHER NAME(S): 1RXS J080114.6-462324; 2PBC J0801.2-4625					
FOUND: ROSAT 2009					
RIGHT ASCENSION ^[1]		08 ^h 33 ^m 05.76 ^s		DECLINATION ^[1] -22° 48' 31.98"	
PARALLAXES (mas) ^[1]		0.599 ± 0.085		DISTANCE (pc) ^[2] 1590.714	
DISTANCE BOUNDARIES (pc) ^[2]				Lower = 1393.979 Upper = 1848.592	
MAGNETIC FIELD (MG) ...					
ORBITAL PERIOD (P_o) ^[3]			SPIN PERIOD (P_s) ^[3]		
DAYS	HOURS	MINUTES	HOURS	MINUTES	SECONDS
0.2208	5.3	318	0.4331	25.9867	1559.2
OPTICAL (CRTS MAGNITUDE)					
...		
OTHER INFORMATION					

SUMMARY

EXTERNAL LINKS



REFERENCES

- ¹ Gaia Collaboration et al. (2018b): Summary of the contents and survey properties
- ² Bailer-Jones et al. 2018, "Estimating Distance from Parallaxes, IV. Distances to 1.3 Billion Stars in Gaia Data Release 2", *ApJ*, Vol. 156, 58
- ³ Koji, Mukai 2014, *The Catalog of IPs and IP Candidates by Right Ascension*
- ⁴ HEASARC Skyview: ROSAT All-Sky
- ⁵