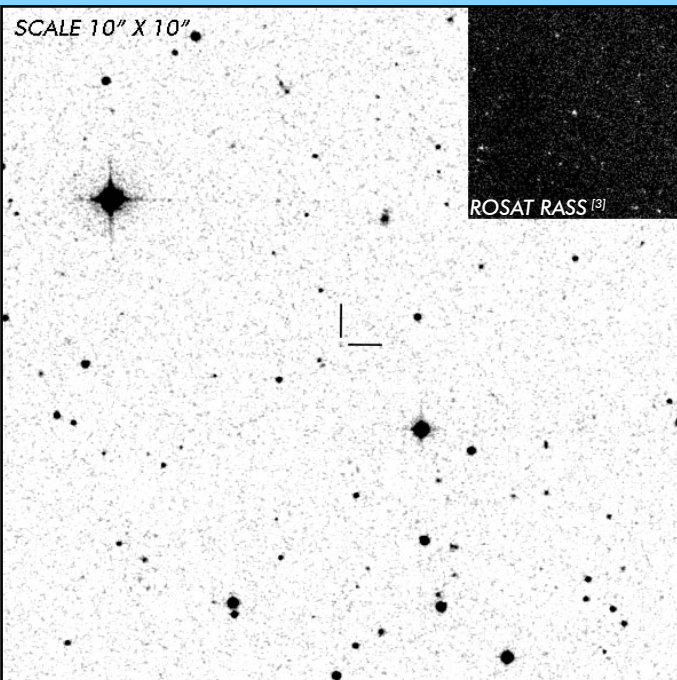


FH UMa

Short Period Polar

OBSERVATION DATA

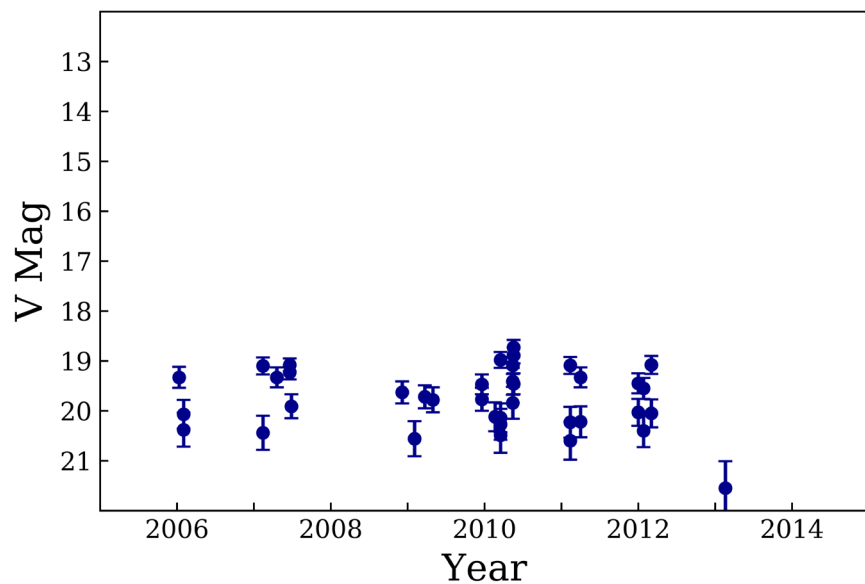


OTHER NAME(S): RX J1047.1+6335; RBS0904; 1RXS J104710.3+633522			
FOUND: ROSAT RBSC			
RIGHT ASCENSION [1]	10 ^h 47 ^m 09.88 ^s	DECLINATION [1]	+63° 35' 13.60"
PARALLAXES (mas)	...	DISTANCE (pc)	590
DISTANCE BOUNDARIES (pc)		Lower = 320	Upper = 1070
MAGNETIC FIELD (MG) [2]		B _(1,2) > 20
ORBITAL PERIOD & SPIN PERIOD			
DAYS	HOURS	MINUTES	
0.05567	1.336	80.160	
OPTICAL (CRTS MAGNITUDE)			
V _{HIGH} = 18.75	V _{LOW} = 20.75	V _(MODE 1) = 20.25	...
OTHER INFORMATION			

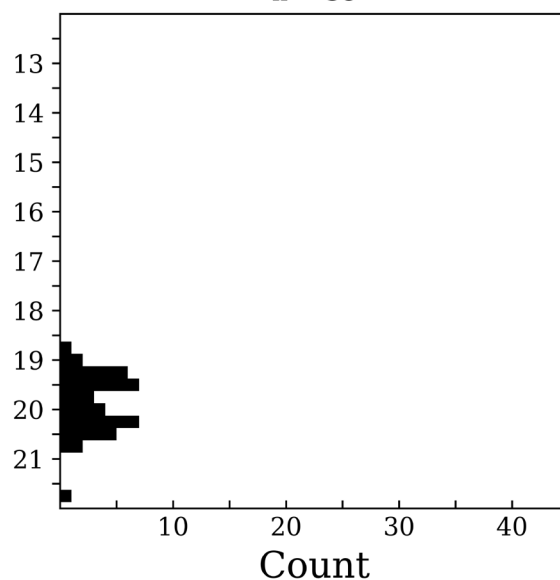
SUMMARY

CRTS PHOTOMETRY

FH UMa



n = 38



EXTERNAL LINKS



REFERENCES

- ¹ [Downes, Ronald A. et al 2001, "A Catalog and Atlas of Cataclysmic Variables: The Living Edition", *PASP*, Vol. 113, Iss. 784, 764-768](#)
- ² [Ferrario, Lilia, et al. 2015, "Magnetic White Dwarfs", *SSRv* 191, 111-169](#)
- ³ [HEASARC Skyview: ROSAT All-Sky](#)
- ⁴ [Pretorius, Magaretha L. et al. 2013, "The space density of magnetic cataclysmic variables", *MNRAS*, Vol. 432, Iss. 1, p. 570-583](#)
- ⁵ [Singh, K. P. et al. 1995, "A New Magnetic Cataclysmic Variable: WGA J1047.1+6335", *ApJ*, V. 453, p. L95](#)

6
7