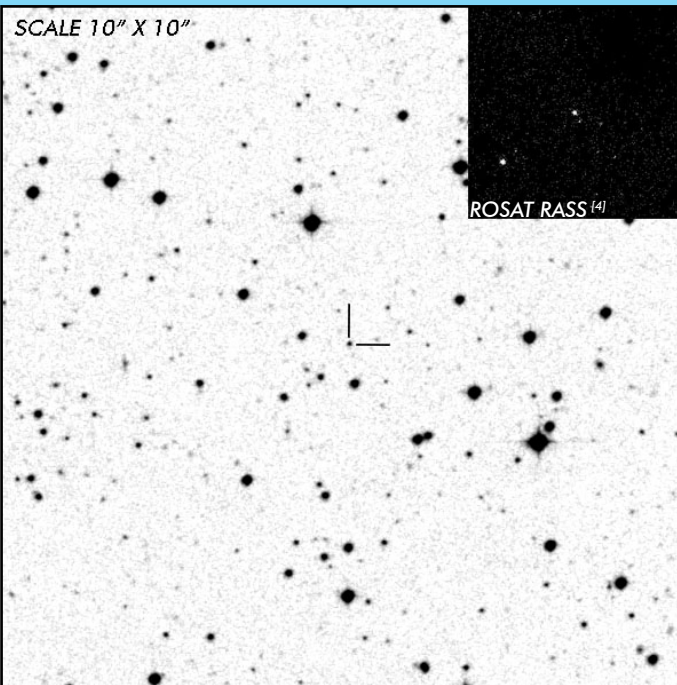


# J1002-1925

## Short Period Polar

### OBSERVATION DATA



<b>OTHER NAME(S):</b> 1RXS J100211.4-192534; RE J1002-19			
<b>FOUND:</b> ROSAT RBSC 1998			
<b>RIGHT ASCENSION</b> <sup>[1]</sup>	10 <sup>h</sup> 02 <sup>m</sup> 11.73 <sup>s</sup>	<b>DECLINATION</b> <sup>[1]</sup>	-19° 25' 37.27"
<b>PARALLAXES (mas)</b> <sup>[2]</sup>	1.199 ± 0.118	<b>DISTANCE (pc)</b> <sup>[3]</sup>	847.574
<b>DISTANCE BOUNDARIES (pc)</b> <sup>[3]</sup>		Lower = 766.596	Upper = 943.894
<b>MAGNETIC FIELD (MG)</b>	B <sub>(1)</sub> = 33	...	<b>WD MASS (e)</b> 0.82
<b>ORBITAL PERIOD &amp; SPIN PERIOD</b>			
<b>DAYS</b>	<b>HOURS</b>	<b>MINUTES</b>	
0.06943	1.6663	99.9758	
<b>OPTICAL (CRTS MAGNITUDE)</b>			
...	...	...	...
<b>OTHER INFORMATION</b>			

### SUMMARY

### EXTERNAL LINKS



### REFERENCES

- <sup>1</sup> Downes, R. A. et al. 2001, "A catalog and atlas of cataclysmic variables: the living edition.", *PASP*, 113, 764D
- <sup>2</sup> Gaia Collaboration et al. (2018b): Summary of the contents and survey properties
- <sup>3</sup> Bailer-Jones et al. 2018, "Estimating Distance from Parallaxes, IV. Distances to 1.3 Billion Stars in Gaia Data Release 2", *ApJ*, Vol. 156, 58
- <sup>4</sup> HEASARC Skyview: ROSAT All-Sky
- <sup>4</sup> Thomas, H-C. et al. 1998, "Identification of soft high galactic latitude RASS X-ray sources. I. A complete count-rate limited sample", *A&A*, Vol. 335, p. 467-478
- <sup>5</sup> Beuermann, K. et al. 2021, "Neglected X-ray discovered polars. III. RX J0154.0-5947, RX J0600.5-2709, RX J0859.1+0537, RX J0953.1+1458, and RX J1002.2-1925", *A&A*, Vol. 645, id.A56, pp. 24