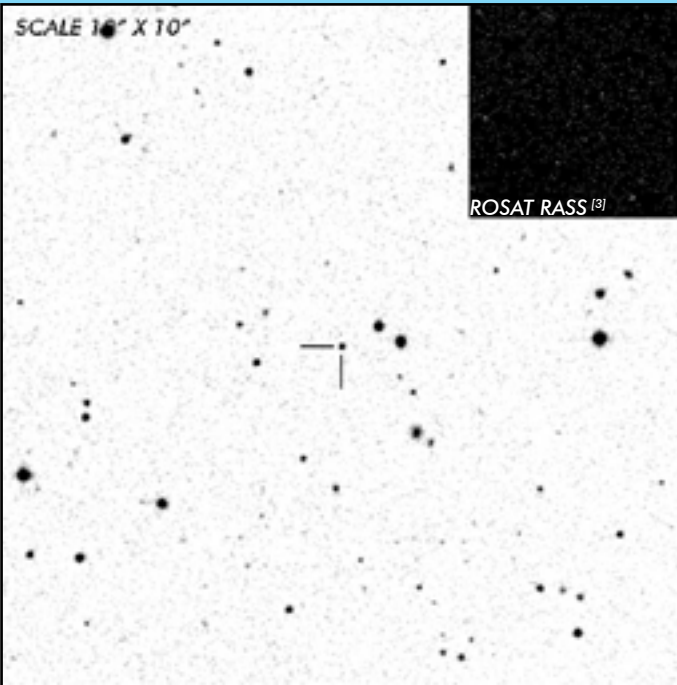




J0921+2038

Short Period Polar

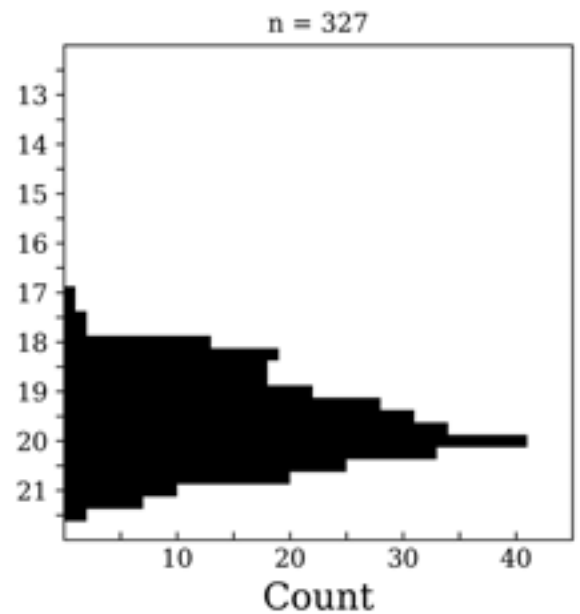
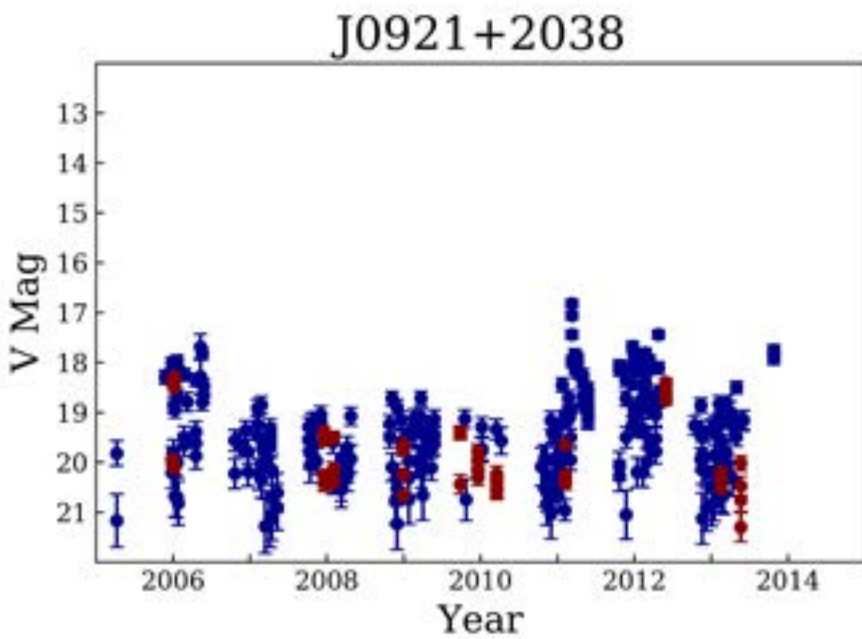
OBSERVATION DATA



OTHER NAME(S): CRTS J092122.8+203858; SDSS J092122.83+203857.0			
FOUND: SDSS 1999			
RIGHT ASCENSION [1]	09 ^h 21 ^m 22.83 ^s	DECLINATION [1]	+20° 38' 57.18"
PARALLAXES (mas)	...	DISTANCE (pc)	...
DISTANCE BOUNDARIES (pc)	
MAGNETIC FIELD (MG) [2]		B ₍₁₎ =32
ORBITAL PERIOD & SPIN PERIOD			
DAYS	HOURS	MINUTES	
0.05850	1.4040	84.241	
OPTICAL (CRTS MAGNITUDE)			
V _{HIGH} = 17	V _{LOW} = 21.5	V _(MODE 1) = 20	...
OTHER INFORMATION			

SUMMARY

CRTS PHOTOMETRY



EXTERNAL LINKS



REFERENCES

- ¹ [Gaia Collaboration et al. \(2018b\): Summary of the contents and survey properties](#)
- ² [Ferrario, Lilia, et al. 2015, "Magnetic White Dwarfs", SSRv 191, 111-169](#)
- ³ [HEASARC Skyview: ROSAT All-Sky](#)
- ⁴