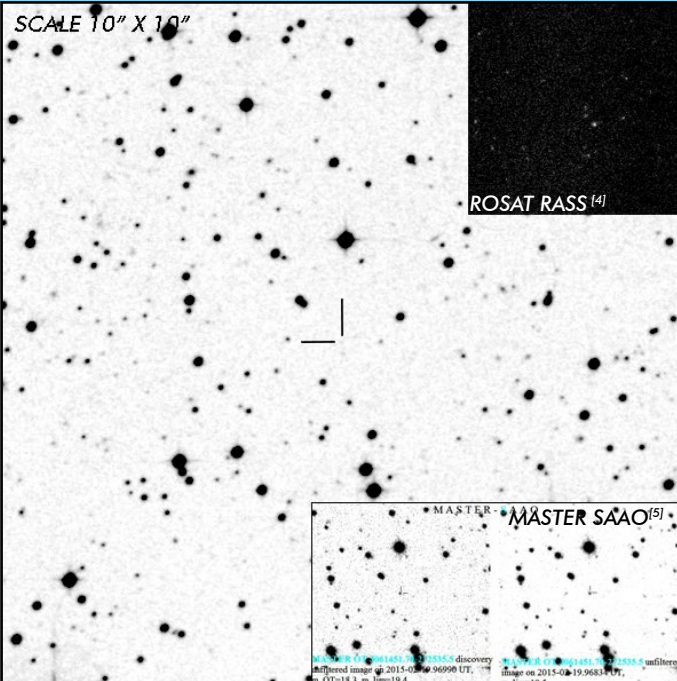




J0614-2725

Short Period Eclipsing Polar

OBSERVATION DATA



OTHER NAME(S): MASTER OT J061451.70-272535.5			
FOUND:			
RIGHT ASCENSION ^[1]	06 ^h 14 ^m 51.70 ^s	DECLINATION ^[1]	-27° 25' 35.5"
PARALLAXES (mas) ^[2]	1.12 ± 0.27	DISTANCE (pc) ^[3]	899.6
DISTANCE BOUNDARIES (pc) ^[3]		Lower = 700.44	Upper = 1240.90
MAGNETIC FIELD (MG)			
...			
ORBITAL PERIOD & SPIN PERIOD			
DAYS	HOURS	MINUTES	
0.08661	2.0786	124.716	
OPTICAL (CRTS MAGNITUDE)			
...
OTHER INFORMATION			

SUMMARY

EXTERNAL LINKS



REFERENCES

- ¹ Shumkov V. et al. 2015, "MASTER: 4 optical transients discovery ", *ATel* 7127
- ² Gaia Collaboration et al. (2018b): Summary of the contents and survey properties
- ³ Bailer-Jones et al. 2018, "Estimating Distance from Parallaxes, IV. Distances to 1.33 Billion Stars in Gaia Data Release 2", *ApJ*, Vol. 156, 58
- ⁴ HEASARC Skyview: ROSAT All-Sky
- ⁵ Breytenbach, H. et al. 2019, "Discovery, observations and modelling of a new eclipsing polar: MASTER OT J061451.70-272535.5 ", *MNRAS* 484, 3831-3845
- ⁶