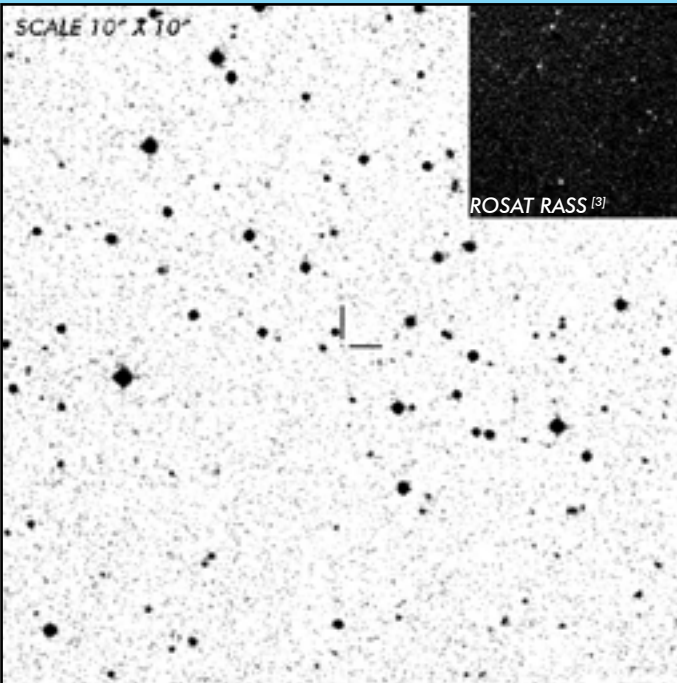




J1321+5609

Short Period
Polar

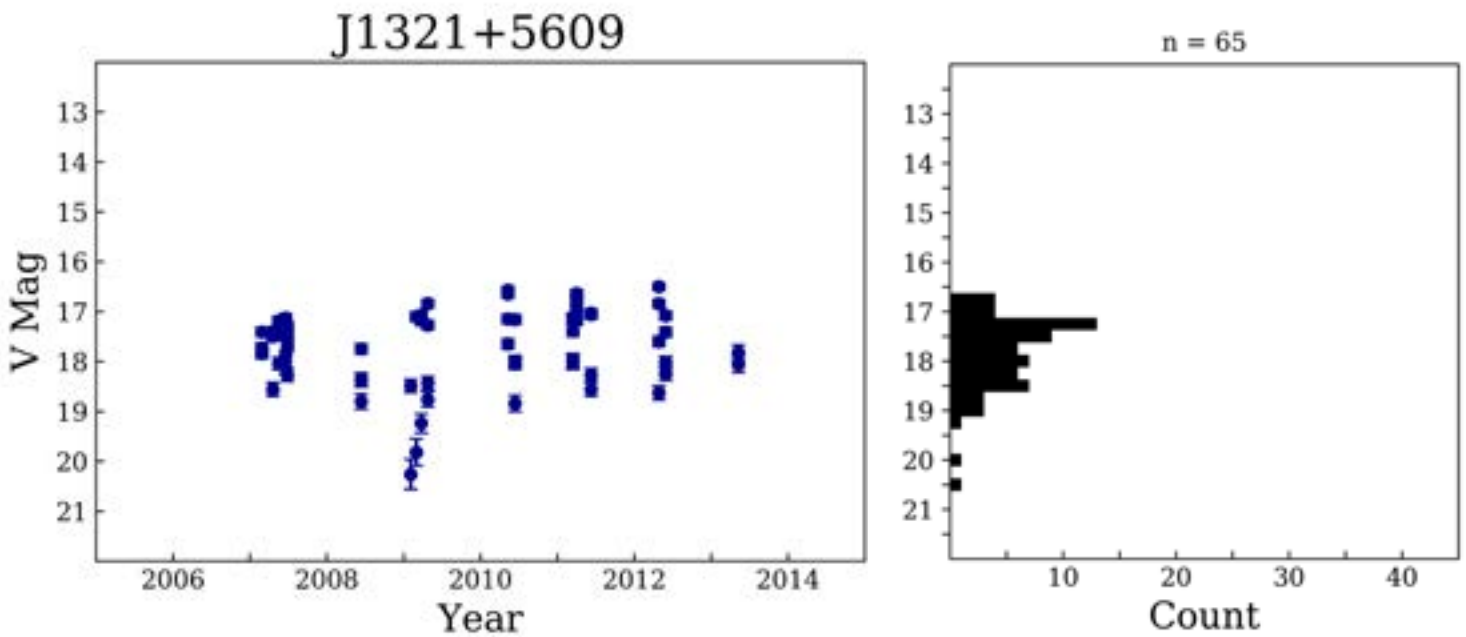
OBSERVATION DATA



OTHER NAME(S): MASTER OT J132104.04+560957.8			
FOUND: MASTER OT 2012			
RIGHT ASCENSION ^[1]	13 ^h 21 ^m 04.01 ^s	DECLINATION ^[1]	+56° 09' 58.01"
PARALLAXES (mas) ^[1]	1.21 ± 0.07	DISTANCE (pc) ^[2]	804.3
DISTANCE BOUNDARIES (pc) ^[2]		Lower = 758.58	Upper = 855.77
MAGNETIC FIELD (MG)			
...			
ORBITAL PERIOD & SPIN PERIOD			
DAYS		HOURS	
0.06324		1.5176	
MINUTES			
91.058			
OPTICAL (CRTS MAGNITUDE)			
V _{HIGH} = 16.75	V _{LOW} = 19.25	V _(MODE 1) = 17.25	...
OTHER INFORMATION			

SUMMARY

CRTS PHOTOMETRY



EXTERNAL LINKS



REFERENCES

- ¹ [Gaia Collaboration et al. \(2018b\): Summary of the contents and survey properties](#)
- ² [Bailor-Jones et al. 2018, "Estimating Distance from Parallaxes, IV. Distances to 1.3 Billion Stars in Gaia Data Release 2", *ApJ*, Vol. 156, 58](#)
- ³ [HEASARC Skyview: ROSAT All-Sky](#)
- ⁴