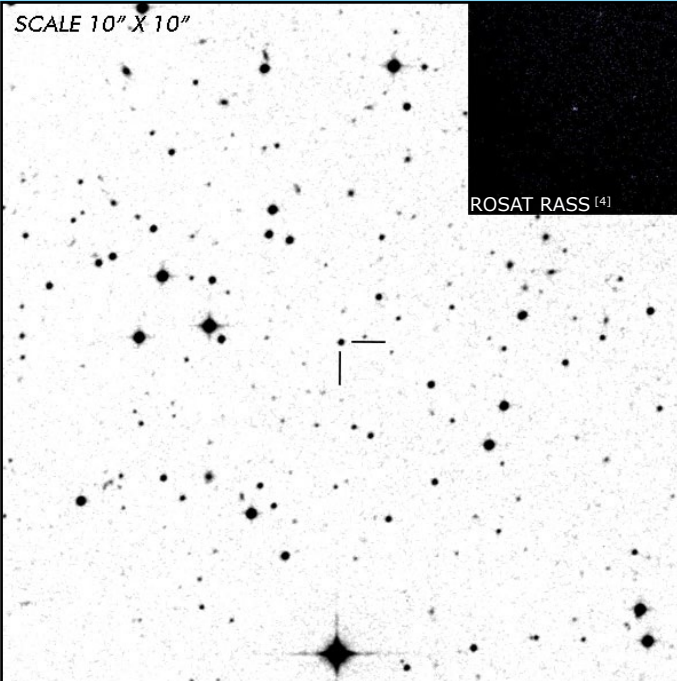




# CW Hyi

## Long Period Polar

### OBSERVATION DATA



<b>OTHER NAME(S):</b> RBS0324; 1RXS J023052.9-684203			
<b>FOUND:</b> ROSAT RBSC 2000			
<b>RIGHT ASCENSION</b> <sup>[1]</sup>	02 <sup>h</sup> 30 <sup>m</sup> 51.149 <sup>s</sup>	<b>DECLINATION</b> <sup>[1]</sup>	-68° 42' 05.441"
<b>PARALLAXES (mas)</b> <sup>[1]</sup>	1.813 ± 0.066	<b>DISTANCE (pc)</b> <sup>[2]</sup>	543.214
<b>DISTANCE BOUNDARIES (pc)</b> <sup>[2]</sup>		Lower = 520.569	Upper = 563.705
<b>MAGNETIC FIELD (MG)</b> <sup>[3]</sup>		B <sub>(1)</sub> = 13	... ..
<b>ORBITAL PERIOD &amp; SPIN PERIOD</b>			
<b>DAYS</b>	<b>HOURS</b>	<b>MINUTES</b>	
0.12625	3.0300	181.800	
<b>OPTICAL (CRTS MAGNITUDE)</b>			
...	...	...	...
<b>OTHER INFORMATION</b>			

### SUMMARY

### EXTERNAL LINKS



### REFERENCES

- <sup>1</sup> [Gaia Collaboration et al. \(2018b\): Summary of the contents and survey properties](#)
- <sup>2</sup> [Bailer-Jones et al. 2018, "Estimating Distance from Parallaxes. IV. Distances to 1.33 Billion Stars in Gaia Data Release 2", ApJ, Vol. 156, 58](#)
- <sup>3</sup> [Schwope, A. D. et al 2002, "The census of cataclysmic variables in the ROSAT Bright Survey", A&A, 396, 865-910](#)
- <sup>4</sup> [HEASARC Skyview: ROSAT All-Sky](#)
- <sup>5</sup> [Schwope, A. et al. 2000, "The ROSAT Bright Survey: II. Catalogue of all High-Galactic Latitude RASS Sources with PSPC Countrate CR>0.2 s<sup>-1</sup>", AN, Vol. 321, p. 1-52](#)
- <sup>6</sup>