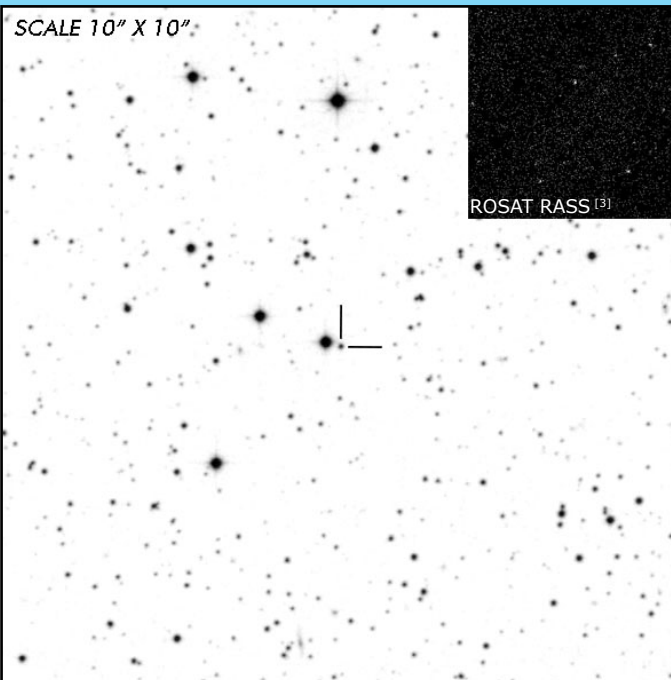


J0153+7446

Long Period Intermediate Polar

OBSERVATION DATA

SCALE 10" X 10"



ROSAT RASS [3]

OTHER NAME(S): Cas 1; RX J0153.3+7446; 1RXS J015317.9+744641					
FOUND: ROSAT 1995					
RIGHT ASCENSION [1]		01 ^h 53 ^m 21.01 ^s		DECLINATION [1]	
				+74° 46' 22.02"	
PARALLAXES (mas)		0.7199 ± 0.0503		DISTANCE (pc)	
				1367.026	
DISTANCE BOUNDARIES (pc)			Lower = 1279.767		Upper = 1474.375
MAGNETIC FIELD (MG)		
ORBITAL PERIOD (P _o) [2]			SPIN PERIOD (P _s) [2]		
DAYS	HOURS	MINUTES	HOURS	MINUTES	SECONDS
0.16415	3.9396	236.376	0.54833	32.9	1974
OPTICAL (ASAS-SN)					
V _{HIGH} = 11.64		V _{LOW} = 11.69		V _{MEAN} = 11.67	
				...	
OTHER INFORMATION					

SUMMARY

EXTERNAL LINKS



REFERENCES

¹ [Gaia Collaboration et al. \(2018b\): Summary of the contents and survey properties](#)

² [Koji, Mukai 2014, The Catalog of IPs and IP Candidates by Right Ascension](#)

³ [HEASARC Skyview: ROSAT All-Sky](#)

⁴ [Haberl, F. et al. 1995, "New Intermediate Polars Discovered in the ROSAT survey: Two Spectrally Distinct Classes.", A&A, Vol. 297, p. L37](#)

⁵ [Barrett, P. E. et al. 2017, "A Jansky VLA Survey of Magnetic Cataclysmic Variable Stars. I. The Data", AJ, Vol. 154, Iss. 6, 252](#)

⁶