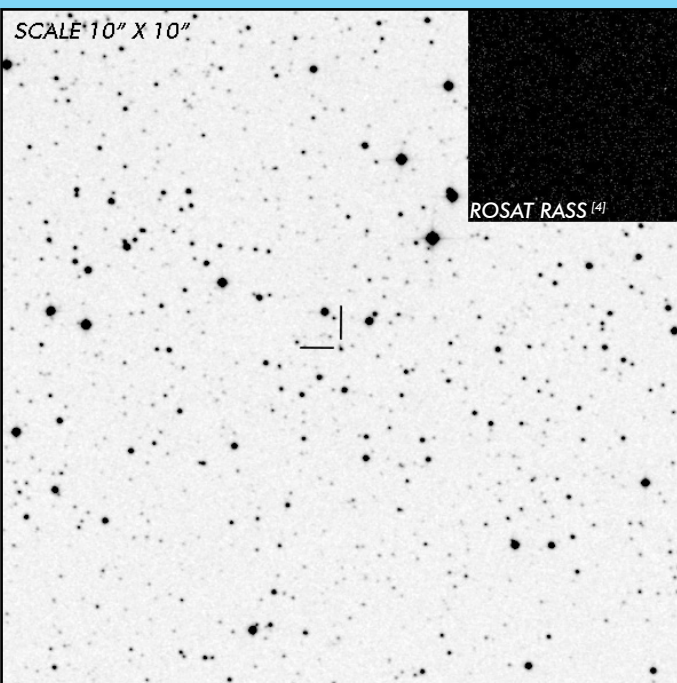


# V902 Mon

## Long Period Eclipsing Intermediate Polar

### OBSERVATION DATA



<b>OTHER NAME(S):</b> IPHAS J062746.41+014811.3					
<b>FOUND:</b> 2007					
<b>RIGHT ASCENSION</b> <sup>[1]</sup>		06 <sup>h</sup> 27 <sup>m</sup> 46.40 <sup>s</sup>	<b>DECLINATION</b> <sup>[1]</sup>		+01° 48' 11.03"
<b>PARALLAXES (mas)</b> <sup>[1]</sup>		0.29 ± 0.13	<b>DISTANCE (pc)</b> <sup>[2]</sup>		3045.5
<b>DISTANCE BOUNDARIES (pc)</b> <sup>[2]</sup>			Lower = 2180.516	Upper = 4636.578	
<b>MAGNETIC FIELD (MG)</b>			...	...	
<b>ORBITAL PERIOD (P<sub>o</sub>)</b> <sup>[3]</sup>			<b>SPIN PERIOD (P<sub>s</sub>)</b> <sup>[3]</sup>		
<b>DAYS</b>	<b>HOURS</b>	<b>MINUTES</b>	<b>HOURS</b>	<b>MINUTES</b>	<b>SECONDS</b>
0.34008	8.162	489.72	0.6133	36.8	2208
<b>OPTICAL (CRTS MAGNITUDE)</b>					
...	...	...	...	...	...
<b>OTHER INFORMATION</b>					

### SUMMARY

### EXTERNAL LINKS



### REFERENCES

- <sup>1</sup> Gaia Collaboration et al. (2018b): Summary of the contents and survey properties
- <sup>2</sup> Bailer-Jones et al. 2018, "Estimating Distance from Parallaxes, IV. Distances to 1.33 Billion Stars in Gaia Data Release 2", *ApJ*, Vol. 156, 58
- <sup>3</sup> Koji, Mukai 2014, *The Catalog of IPs and IP Candidates by Right Ascension*
- <sup>4</sup> HEASARC Skyview: ROSAT All-Sky
- <sup>5</sup>