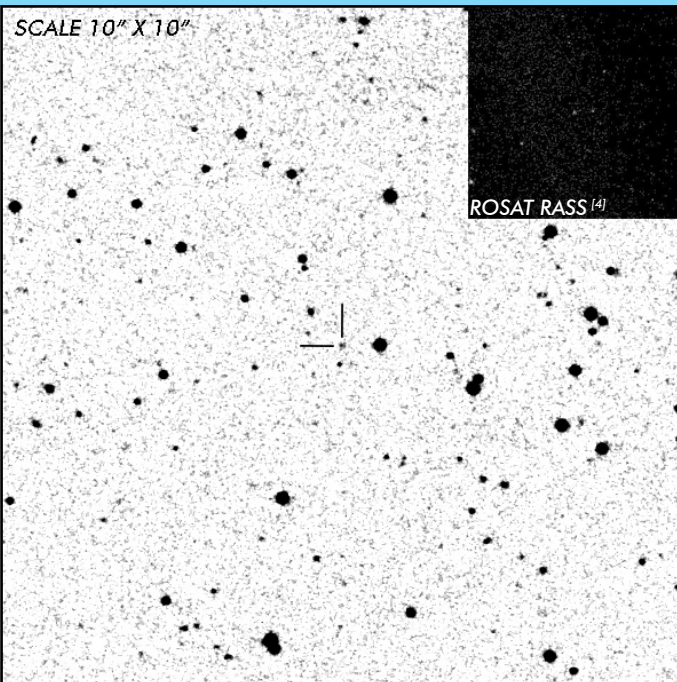


FR Lyn

Short Period Polar

OBSERVATION DATA

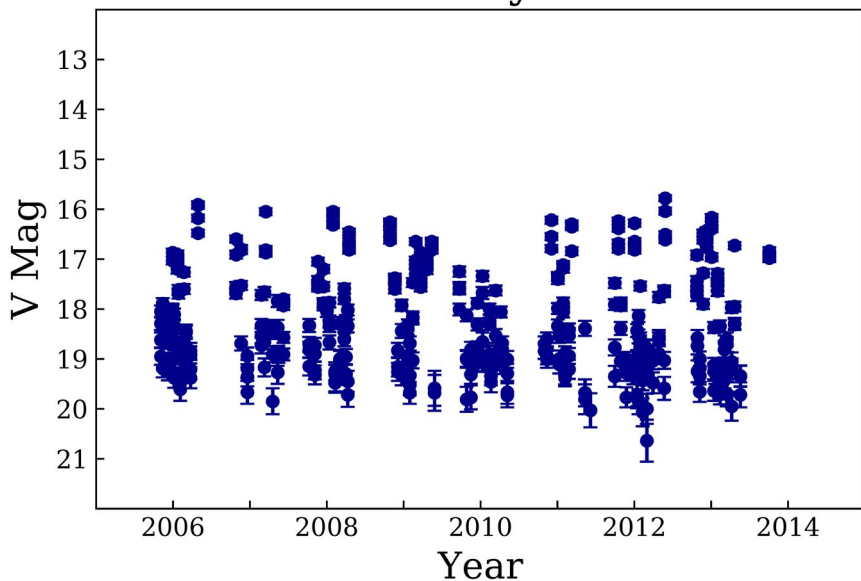


OTHER NAME(S): 1ES 0851+39.2; EUVE J0854+390			
FOUND: EUVE			
RIGHT ASCENSION ^[1]	08 ^h 54 ^m 14.02 ^s	DECLINATION ^[1]	+39° 05' 37.36"
PARALLAXES (mas) ^[1]	1.82 ± 0.38	DISTANCE (pc) ^[2]	553.0
DISTANCE BOUNDARIES (pc) ^[2]		Lower = 448.10	Upper = 716.92
MAGNETIC FIELD (MG) ^[3]		B ₍₁₎ = 44
ORBITAL PERIOD & SPIN PERIOD			
DAYS	HOURS	MINUTES	
0.07865	1.8876	113.256	
OPTICAL (CRTS MAGNITUDE)			
V _{HIGH} = 16	V _{LOW} = 20.25	V _(MODE 1) = 19.25	...
OTHER INFORMATION			

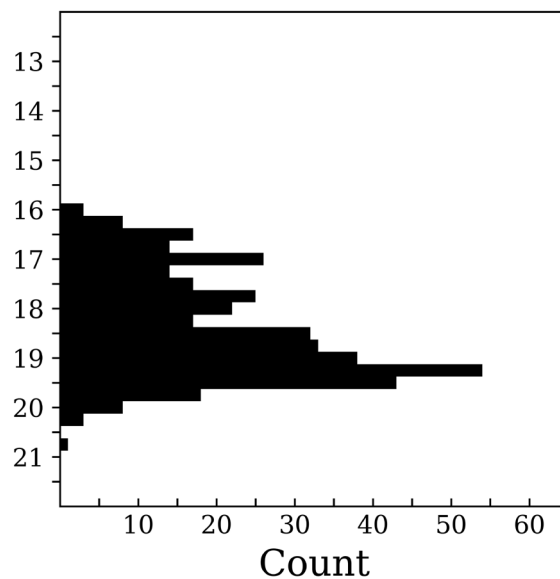
SUMMARY

CRTS PHOTOMETRY

FR Lyn



n = 393



EXTERNAL LINKS



REFERENCES

- ¹ [Gaia Collaboration et al. \(2018b\): Summary of the contents and survey properties](#)
- ² [Bailer-Jones et al. 2018, "Estimating Distance from Parallaxes, IV. Distances to 1.33 Billion Stars in Gaia Data Release 2", *ApJ*, Vol. 156, 58](#)
- ³ [Ferrario, Lilia, et al. 2015, "Magnetic White Dwarfs", *SSRv* 191, 111-169](#)
- ⁴ [HEASARC Skyview: ROSAT All-Sky](#)
- ⁵