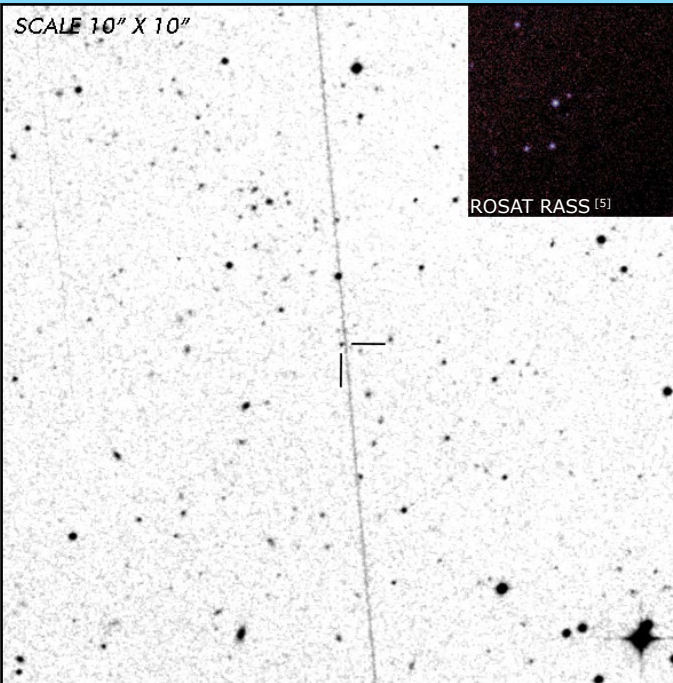




WW Hor

Short Period Eclipsing Polar

OBSERVATION DATA



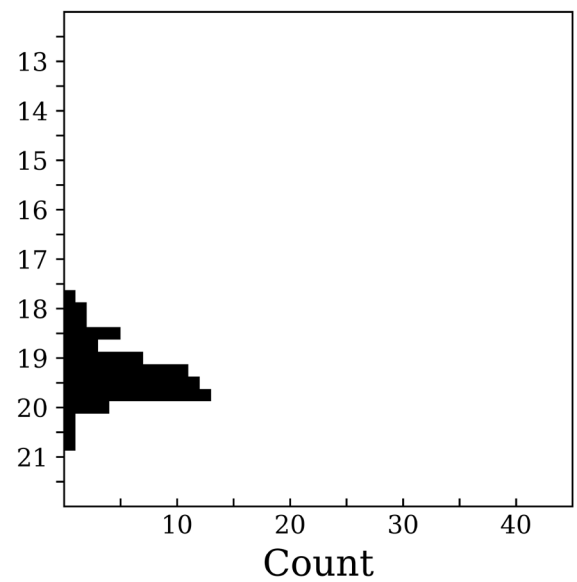
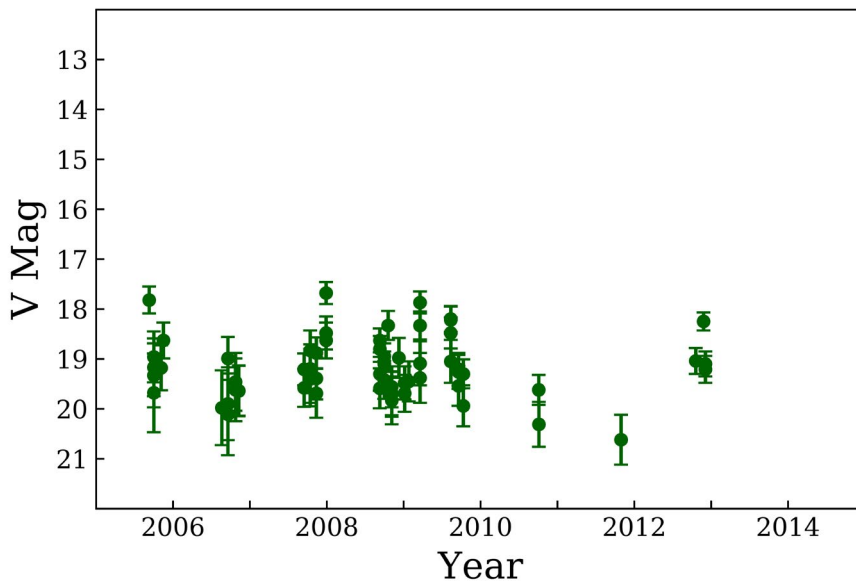
| | | | |
|--|---|-------------------------------------|------------------|
| OTHER NAME(S): EXO 023432-5232.3; 1RXS J023610.9-521910 | | | |
| FOUND: EXOSAT 1986 | | | |
| RIGHT ASCENSION ^[1] | 02 ^h 36 ^m 11.442 ^s | DECLINATION ^[1] | -52° 19' 13.941" |
| PARALLAXES (mas) ^[2] | 3.009 ± 0.233 | DISTANCE (pc) ^[3] | 333.624 |
| DISTANCE BOUNDARIES (pc) ^[3] | | Lower = 309.779 | Upper = 374.430 |
| MAGNETIC FIELD (MG) ^[4] | | B ₍₁₎ = 25 | |
| WD MASS (M_⊙) | | 1.1 | |
| ORBITAL PERIOD & SPIN PERIOD | | | |
| DAYS | HOURS | MINUTES | |
| 0.08020 | 1.9248 | 115.487 | |
| OPTICAL (CRTS MAGNITUDE) | | | |
| V _{HIGH} = 17.75 | V _{LOW} = 20.75 | V _(MODE 1) = 19.75 | ... |
| OTHER INFORMATION | | | |
| | | | |
| | | | |

SUMMARY

CRTS PHOTOMETRY

WW Hor

n = 63



EXTERNAL LINKS



REFERENCES

- ¹ [Downes, R., et al. 1997, "A Catalog and Atlas of Cataclysmic Variables - Second Edition", PASP 109, 345-439](#)
- ² [Gaia Collaboration et al. 2018b: "Summary of the Contents and Survey Properties"](#)
- ³ [Bailer-Jones et al. 2018, "Estimating Distance from Parallaxes, IV. Distances to 1.33 Billion Stars in Gaia Data Release 2", ApJ, Vol. 156, 58](#)
- ⁴ [Bailey, J. et al 1988, "EXO 023432-5232.3 - An eclipsing AM Herculis binary", MNRAS, 234, 19-27](#)
- ⁵ [HEASARC Skyview: ROSAT All-Sky](#)
- ⁶ [Beuermann, K. et al. 1986, "EXO 023432-5232.3", IAU Circ., No. 4289, #2](#)
- ⁷ [Ramsay, G. et al. 2001, "First XMM-Newton Observations of Strongly Magnetic Cataclysmic Variables - I. Spectral Studies of DP Leo and WW Hor", MNRAS, 326, Iss. 2, pp. L27-L32](#)
- ⁸ [Pandel, D. et al. 2002, "First XMM-Newton Observations of Strongly Magnetic Cataclysmic Variables - II. Timing Studies of DP Leo and WW Hor", MNRAS, 332, Iss. 1, pp. 116-126](#)
- ⁹ [Bonnet-Bidaud, J. M. et al. 2015, "Quasi-periodic Oscillations in Accreting Magnetic White Dwarfs. I. Observational Constraints in X-ray and Optical", A&A, Vol. 579, id. A24, pp. 18](#)
- ¹⁰ [Ferrario, L. et al. 2015, "Magnetic White Dwarfs," SSRv, Vol. 191, Iss. 1-4, pp. 111-169](#)
- ¹¹