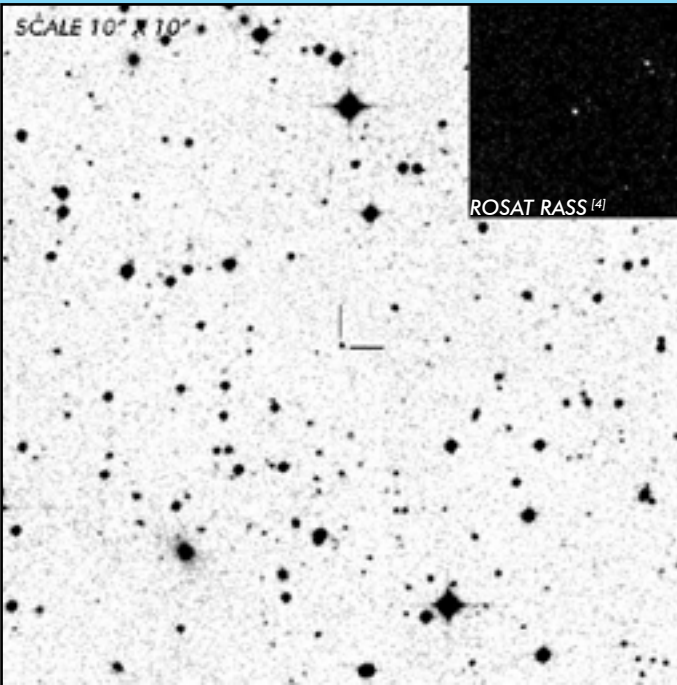




J1007+2017

Long Period Polar

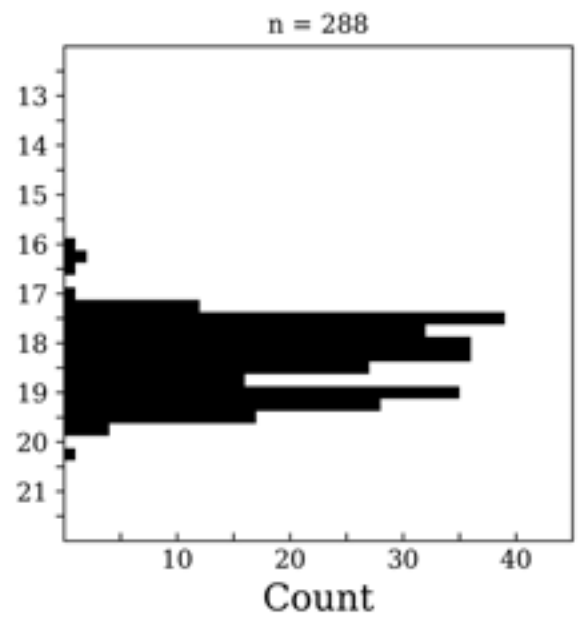
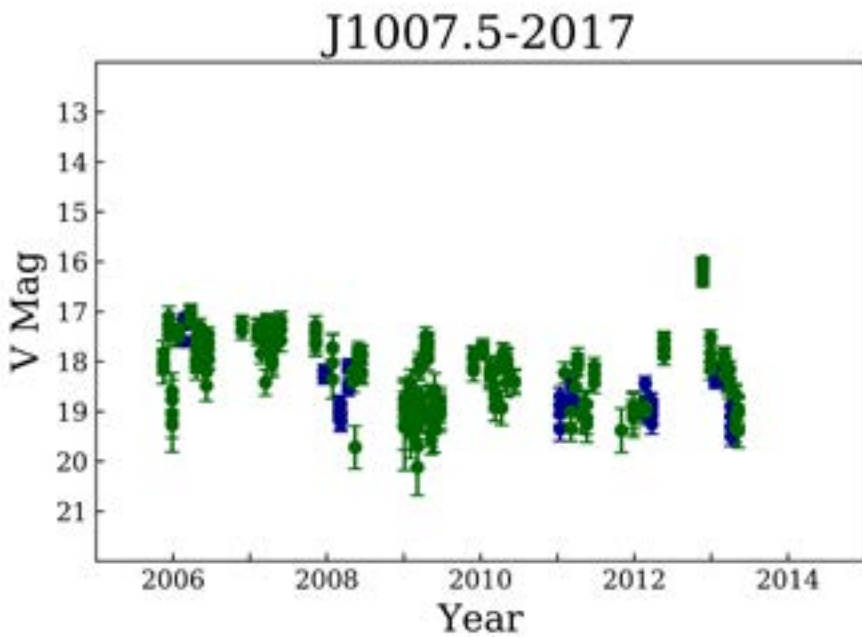
OBSERVATION DATA



OTHER NAME(S): RX J1007.5-2017; 1RXS J100734.4-201731			
FOUND: ROSAT RASS 1999			
RIGHT ASCENSION ^[1]	10 ^h 07 ^m 34.65 ^s	DECLINATION ^[1]	-20° 17' 32.45"
PARALLAXES (mas) ^[1]	1.12 ± 0.19	DISTANCE (pc) ^[2]	872.4
DISTANCE BOUNDARIES (pc) ^[2]		Lower = 742.49	Upper = 1054.06
MAGNETIC FIELD (MG) ^[3]		B ₍₁₎ = 94
ORBITAL PERIOD & SPIN PERIOD			
DAYS	HOURS	MINUTES	
0.144486	3.4767	208.604	
OPTICAL (CRTS MAGNITUDE)			
V _{HIGH} = 16.25	V _{LOW} = 19.75	V _(MODE 1) = 17.5	...
OTHER INFORMATION			

SUMMARY

CRTS PHOTOMETRY



EXTERNAL LINKS



REFERENCES

- ¹ [Gaia Collaboration et al. \(2018b\): Summary of the contents and survey properties](#)
- ² [Bailor-Jones et al. 2018, "Estimating Distance from Parallaxes, IV. Distances to 1.3 Billion Stars in Gaia Data Release 2", *ApJ*, Vol. 156, 58](#)
- ³ [Ferrario, Lilia et al. 2015, "Magnetic White Dwarfs", *SSRv* 191, 111-169](#)
- ⁴ [HEASARC Skyview: ROSAT All-Sky](#)
- ⁵