

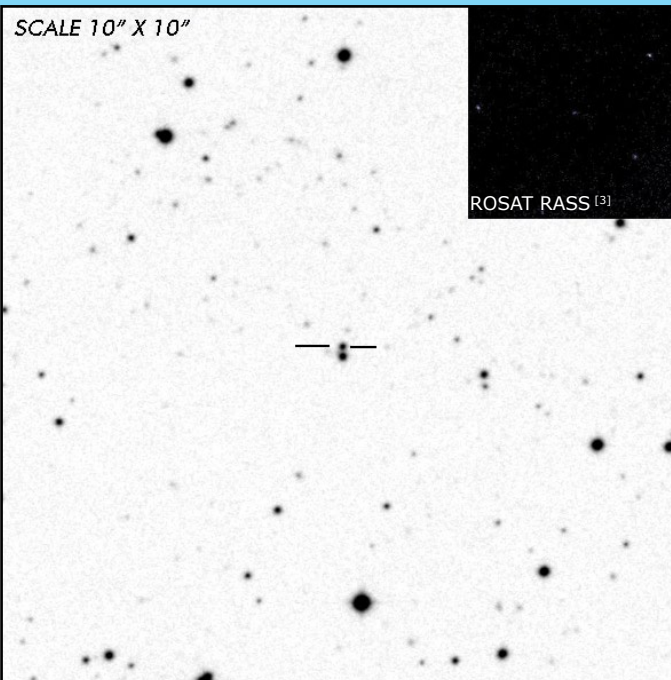


J0154-5947

Short Period Polar

OBSERVATION DATA

SCALE 10" X 10"



ROSAT RASS [3]

OTHER NAME(S): RX J0154.0-5947; 1RXS J014100.4-675332			
FOUND: ROSAT RASS 1999			
RIGHT ASCENSION [1]	01 ^h 54 ^m 0.932 ^s	DECLINATION [1]	-59° 47' 49.095"
PARALLAXES (mas) [1]	3.076±0.027	DISTANCE (pc) [2]	321.091
DISTANCE BOUNDARIES (pc) [2]		Lower = 317.814	Upper = 323.943
MAGNETIC FIELD (MG)	...	WD Mass (M_⊙)	0.750
ORBITAL PERIOD & SPIN PERIOD			
DAYS	HOURS	MINUTES	
0.06177	1.4824	88.9455	
OPTICAL (CRTS MAGNITUDE)			
...
OTHER INFORMATION			

SUMMARY

EXTERNAL LINKS



REFERENCES

¹ Gaia Collaboration et al. (2018b): Summary of the contents and survey properties

² Bailer-Jones et al. 2018, "Estimating Distance from Parallaxes. IV. Distances to 1.33 Billion Stars in Gaia Data Release 2", ApJ, Vol. 156, 58

³ HEASARC Skyview: ROSAT All-Sky

⁴ Beuermann, K. et al. 1999, "Identificatin of Soft High Galactic Latitude RASS X-ray sources. II. Sources with PSPC count rate CR < 0.5 cts/s", A&A, Vol. 347, p. 47-54

⁵ Beuermann, K. et al. 2021, "Neglected X-ray Discovered Polars. III. RX J0154.0-5947, RX J0600.5-2709, RX J0859.1+0537, RX J0953.1+1458, and RX J1002.2-1925", A&A, Vol. 645, pp. 24

⁶