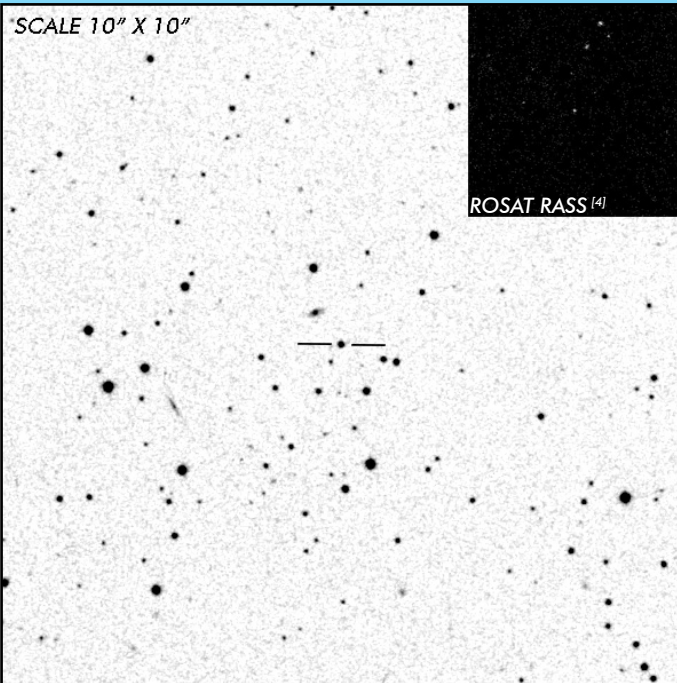


MU Cam

Long Period Intermediate Polar

OBSERVATION DATA



OTHER NAME(S): 1RXS J062518.2+733433; SWIFT J0625.1+7336					
FOUND: ROSAT RASS 1999					
RIGHT ASCENSION ^[1]		06 ^h 25 ^m 16.25 ^s		DECLINATION ^[1]	
				+73° 34' 39.10"	
PARALLAXES (mas) ^[1]		1.019 ± 0.028		DISTANCE (pc) ^[2]	
				954.357	
DISTANCE BOUNDARIES (pc) ^[2]			Lower = 929.181		Upper = 980.907
MAGNETIC FIELD (MG)		
ORBITAL PERIOD (P_o) ^[3]			SPIN PERIOD (P_s) ^[3]		
DAYS	HOURS	MINUTES	HOURS	MINUTES	SECONDS
0.1966	4.718	283.1	0.32979	19.7875	1187.2
OPTICAL (CRTS MAGNITUDE)					
...		
OTHER INFORMATION					

SUMMARY

EXTERNAL LINKS



REFERENCES

- ¹ Gaia Collaboration et al. (2018b): Summary of the contents and survey properties
- ² Bailer-Jones et al. 2018, "Estimating Distance from Parallaxes. IV. Distances to 1.33 Billion Stars in Gaia Data Release 2", *ApJ*, Vol. 156, 58
- ³ Koji, Mukai 2014, *The Catalog of IPs and IP Candidates by Right Ascension*
- ⁴ HEASARC Skyview: ROSAT All-Sky
- ⁵