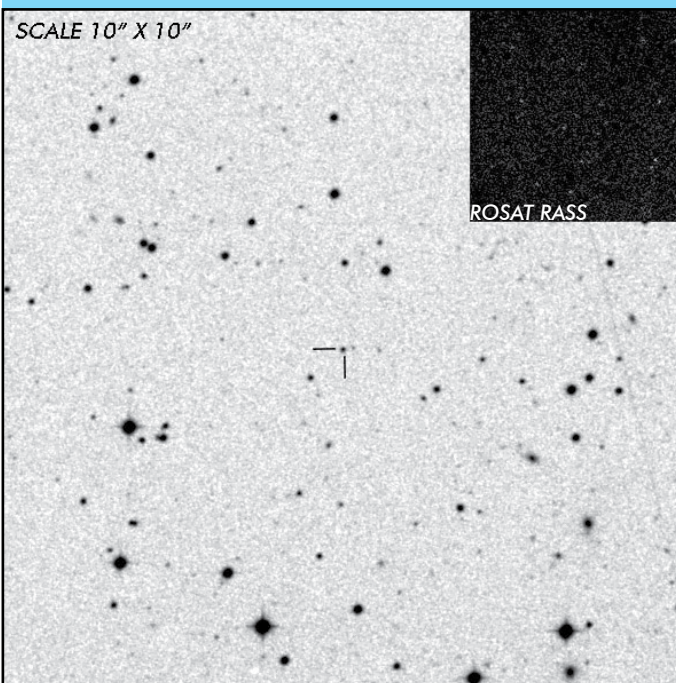


J0503.7-2819

Short Period
Asynchronous Polar

OBSERVATION DATA



OTHER NAME(S): PPMXL 2431202680279124324; 1RXS J050350.6-282324					
FOUND: SWIFT BAT 2017					
RIGHT ASCENSION		05 ^h 03 ^m 49.25 ^s	DECLINATION ^[1]		-28° 23' 8.31"
PARALLAXES (mas)		1.142 ± 0.086	DISTANCE (pc) ^[2]		837
DISTANCE BOUNDARIES (pc)			Lower = 794	Upper = 897	
MAGNETIC FIELD (MG)					
	
WD MASS (M_⊙)					
		...			
ORBITAL PERIOD (P_o)			SPIN PERIOD (P_s)		
DAYS	HOURS	MINUTES	HOURS	MINUTES	SECONDS
0.05662	1.3589	81.5328	0.27089	16.253	975.2?
OPTICAL (CRTS MAGNITUDE)					
...
OTHER INFORMATION					

SUMMARY

CRTS PHOTOMETRY

EXTERNAL LINKS



REFERENCES

¹ Baumgartner, W. H. et al. 2013, "The 70 month Swift-BAT all-sky hard X-ray survey.", *ApJ Supplement*, Vol. 207, Iss. 2, pp. 22

² Halpern, J. P. 2022, "Swift J0503.7-2819: a Short-period Asynchronous Polar or Stream-fed Intermediate Polar", *ApJ*, Vol. 934, Iss. 2, pp. 8

³