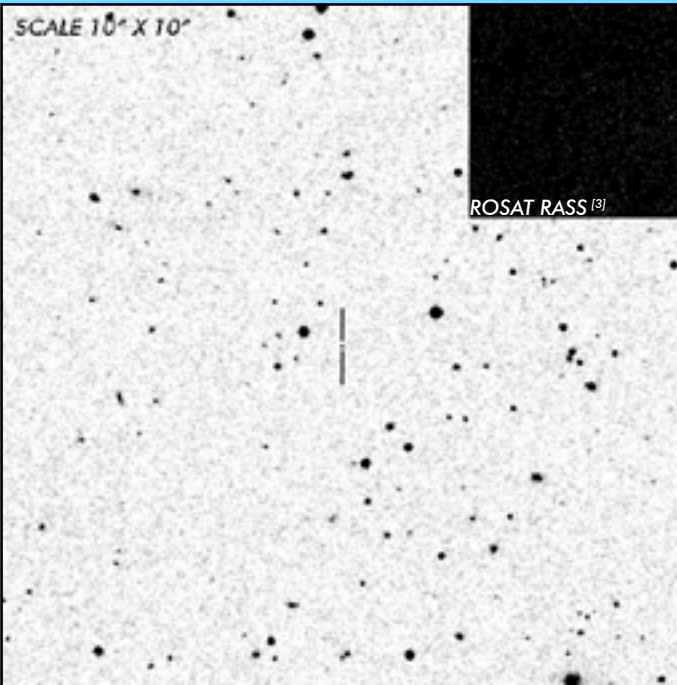




HU Leo

Period Gap Polar

OBSERVATION DATA

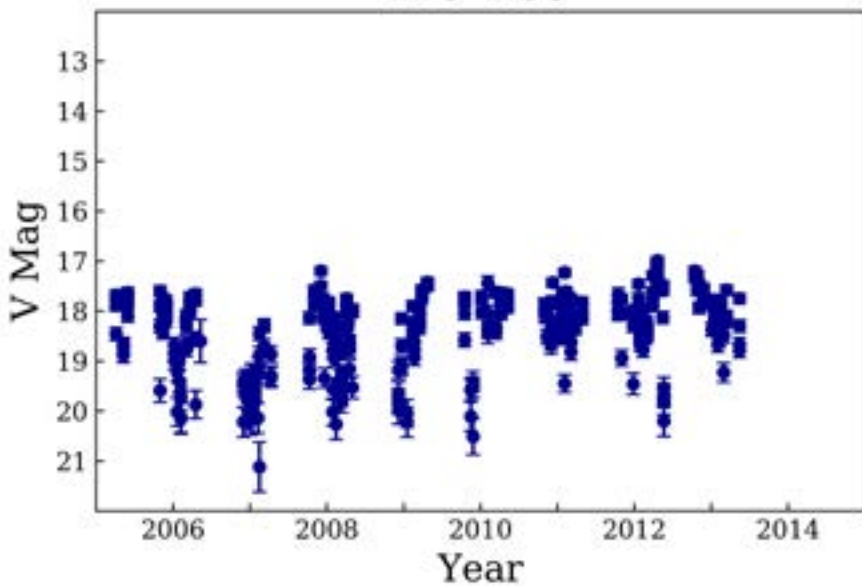


OTHER NAME(S): CRTS J092122.8+203858; SDSS J092122.83+203857.0			
FOUND: SDSS 2005			
RIGHT ASCENSION ^[1]	09 ^h 24 ^m 44.48 ^s	DECLINATION ^[1]	+08° 01' 51.01"
PARALLAXES (mas) ^[2]	1.64 ± 0.46	DISTANCE (pc) ^[2]	616.3
DISTANCE BOUNDARIES (pc) ^[2]		Lower = 461.40	Upper = 901.30
MAGNETIC FIELD (MG)			
...			
ORBITAL PERIOD & SPIN PERIOD			
DAYS	HOURS	MINUTES	
0.09114	2.1874	131.243	
OPTICAL (CRTS MAGNITUDE)			
V _{HIGH} = 17	V _{LOW} = 20.75	V _(MODE 1) = 18	...
OTHER INFORMATION			

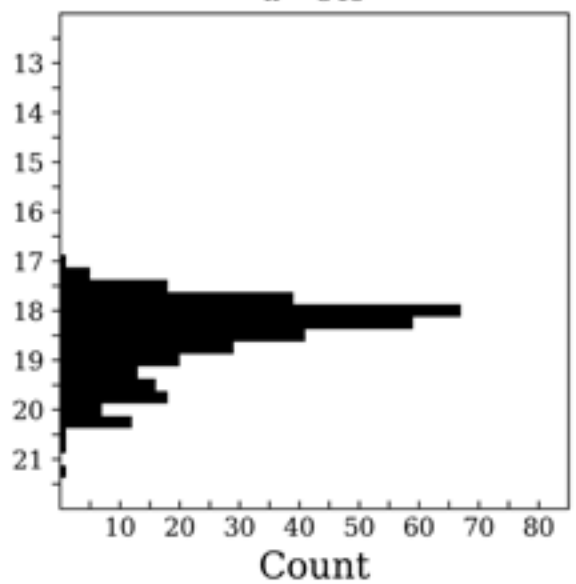
SUMMARY

CRTS PHOTOMETRY

HU Leo



n = 348



EXTERNAL LINKS



REFERENCES

- ¹ [Gaia Collaboration et al. \(2018b\): Summary of the contents and survey properties](#)
- ² [Bailor-Jones et al. 2018, "Estimating Distance from Parallaxes, IV. Distances to 1.3 Billion Stars in Gaia Data Release 2", *ApJ*, Vol. 156, 58](#)
- ³ [HEASARC Skyview: ROSAT All-Sky](#)
- ⁴