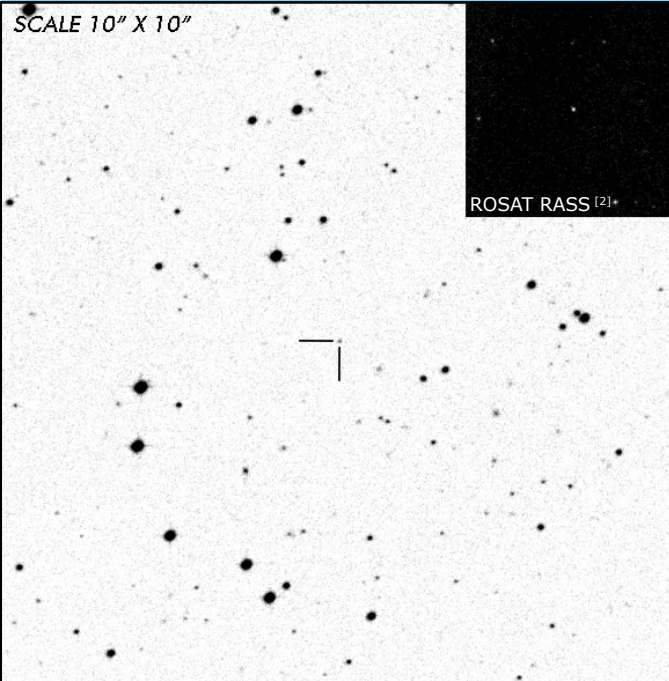




RS Cae

Short Period Polar

OBSERVATION DATA

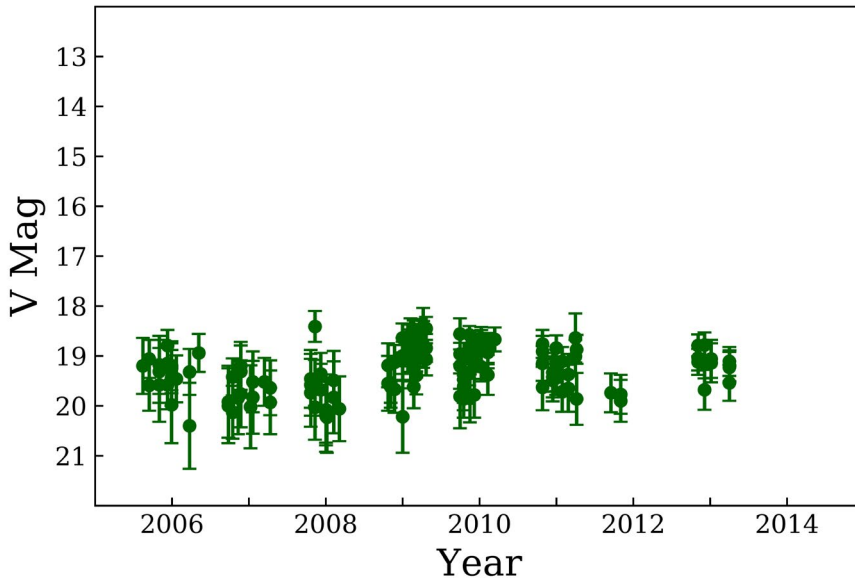


OTHER NAME(S): 1RXS J045325.2-421335; RE J0453-42			
FOUND: ROSAT 1993			
RIGHT ASCENSION [1]	04 ^h 53 ^m 25.551 ^s	DECLINATION [1]	-42° 13' 39.630"
PARALLAXES (mas)	0.746 ± 0.370	DISTANCE (pc) [1]	1408.422
DISTANCE BOUNDARIES (pc)		Lower = 965.527	Upper = 2520.356
MAGNETIC FIELD (MG)		B ₍₁₎ = 36	... W_b MASS (M_⊙) ...
ORBITAL PERIOD & SPIN PERIOD			
DAYS	HOURS	MINUTES [3]	
0.07090	1.7016	102.0960	
OPTICAL (CRTS MAGNITUDE)			
V _{HIGH} = 18.5	V _{LOW} = 20.5	V _{MODE} = 19.25	...
OTHER INFORMATION			
...		...	
...			
...

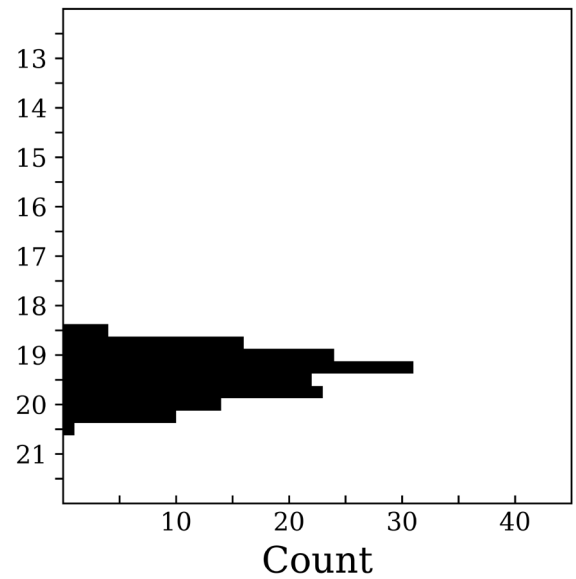
SUMMARY

CRTS PHOTOMETRY

RS Cae



n = 145



EXTERNAL LINKS



REFERENCES

¹ [Downes, Ronald A., et al. 1997, "A Catalog and Atlas of Cataclysmic Variables - 2nd Edition", PASP 109, 345-439](#)

² [Gaia Collaboration et al. \(2018b\): Summary of the contents and survey properties](#)

³ [Bailer-Jones et al. 2018, "Estimating Distance from Parallaxes. IV. Distances to 1.33 Billion Stars in Gaia Data Release 2" ApJ, Vol. 156, 58](#)

⁴ [Burwitz, V. et al. 1996, "X-Ray and Optical Observations of a New ROSAT Discovered Polar: RX J0453.4-4213.", A&A, Vol. 305, p. 507](#)

⁵ [HEASARC Skyview: ROSAT All-Sky](#)

⁶ [Pounds, K. A. et al. 1993, "The ROSAT Wide Field Camera All-Sky Survey of Extreme-Ultraviolet Sources. I. The Bright Source Catalogue." MNRAS, Vol. 260, pp. 77](#)

⁷ [Traulsen, I. et al. 2014, "Phase-Resolved X-ray Spectroscopy and Spectral Energy Distribution of the X-ray Soft Polar RS Caeli", A&A, Vol. 562, pp. 10](#)

⁸