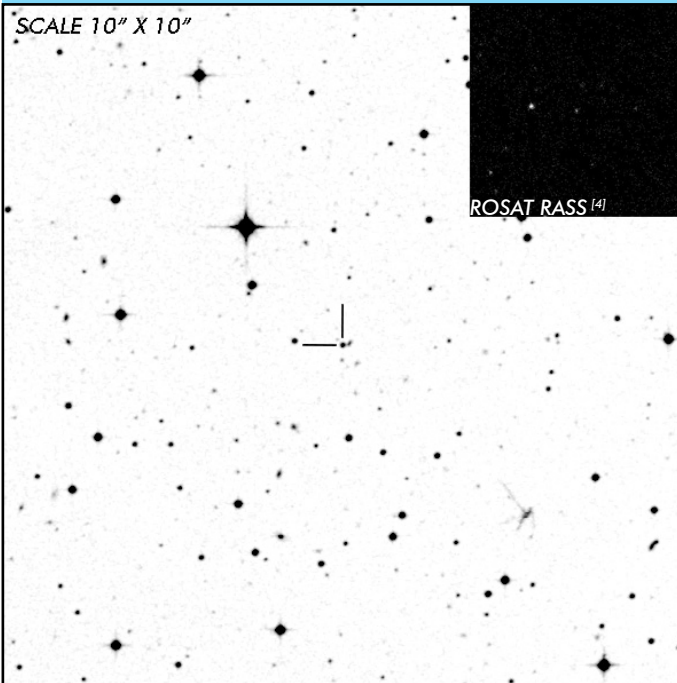


HY Eri

Eclipsing Period Gap Polar

OBSERVATION DATA



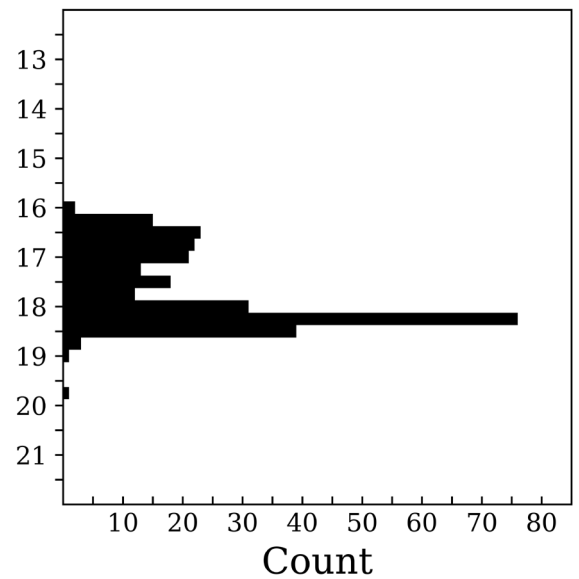
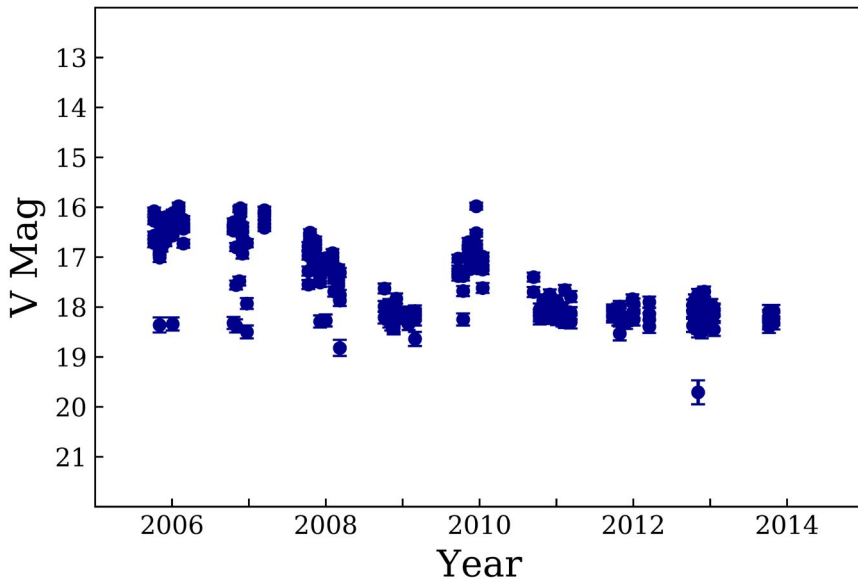
OTHER NAME(S): 1RXS J050146.2-035927			
FOUND: ROSAT			
RIGHT ASCENSION [1]	05 ^h 01 ^m 46.41 ^s	DECLINATION [1]	-03° 59' 20.57"
PARALLAXES (mas) [1]	-0.14 ± 0.82	DISTANCE (pc) [2]	1344.1
DISTANCE BOUNDARIES (pc) [2]		Lower = 829.04	Upper = 2190.35
MAGNETIC FIELD (MG) [3]		B ₍₁₎ = 25
ORBITAL PERIOD & SPIN PERIOD			
DAYS	HOURS	MINUTES	
0.11897	2.8553	171.315	
OPTICAL (CRTS MAGNITUDE)			
V _{HIGH} = 16	V _{LOW} = 19	V ₍₁₎ = 18.25	...
OTHER INFORMATION			

SUMMARY

CRTS PHOTOMETRY

HY Eri

n = 277



EXTERNAL LINKS



REFERENCES

¹ [Gaia Collaboration et al. \(2018b\): Summary of the contents and survey properties](#)

² [Bailer-Jones et al. 2018, "Estimating Distance from Parallaxes, IV. Distances to 1.33 Billion Stars in Gaia Data Release 2", *ApJ*, Vol. 156, 58](#)

³ [Ferrario, Lilia, et al. 2015, "Magnetic White Dwarfs", *SSRv*, Vol. 191, 111-169](#)

⁴ [HEASARC Skyview: ROSAT All-Sky](#)

⁵