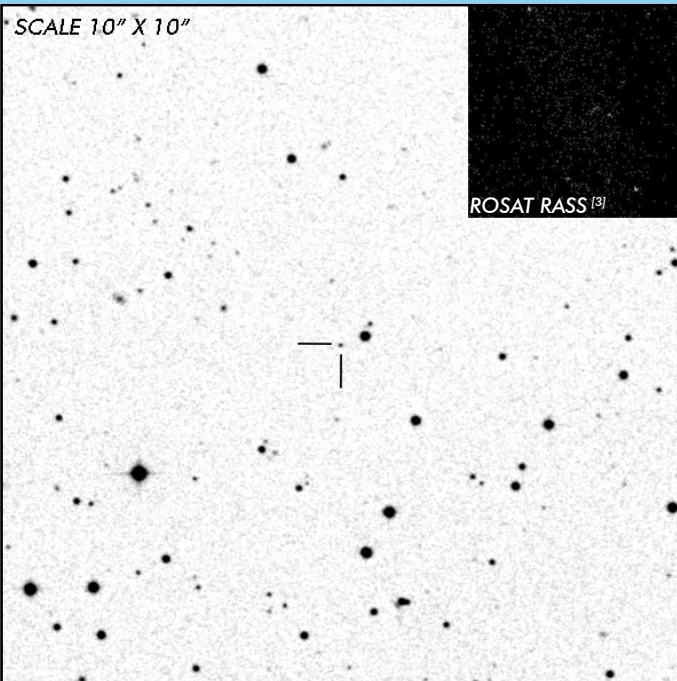


J0837+3830

Long Period Pre-Polar

OBSERVATION DATA

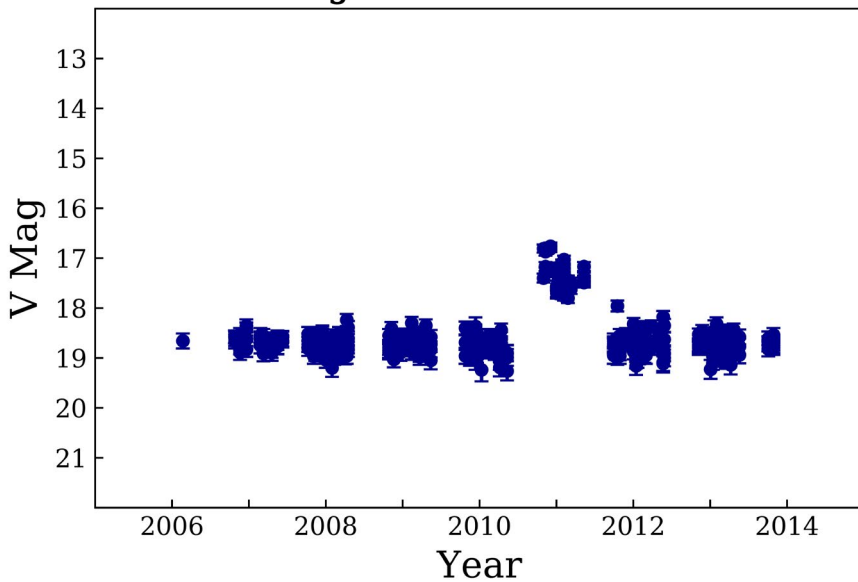


OTHER NAME(S): SDSS J083751.00+383012.5			
FOUND: SDSS 2001			
RIGHT ASCENSION ^[1]	08 ^h 37 ^m 51.01 ^s	DECLINATION ^[1]	+38° 30' 12.60"
PARALLAXES (mas) ^[1]	1.24 ± 0.26	DISTANCE (pc) ^[2]	787.1
DISTANCE BOUNDARIES (pc) ^[2]		Lower = 641.91	Upper = 1007.55
MAGNETIC FIELD (MG)			
...			
ORBITAL PERIOD & SPIN PERIOD			
DAYS		HOURS	
0.13250		3.1800	
MINUTES			
190.800			
OPTICAL (CRTS MAGNITUDE)			
V _{HIGH} = 17	V _{LOW} = 19.25	V _(MODE 1) = 19	...
OTHER INFORMATION			

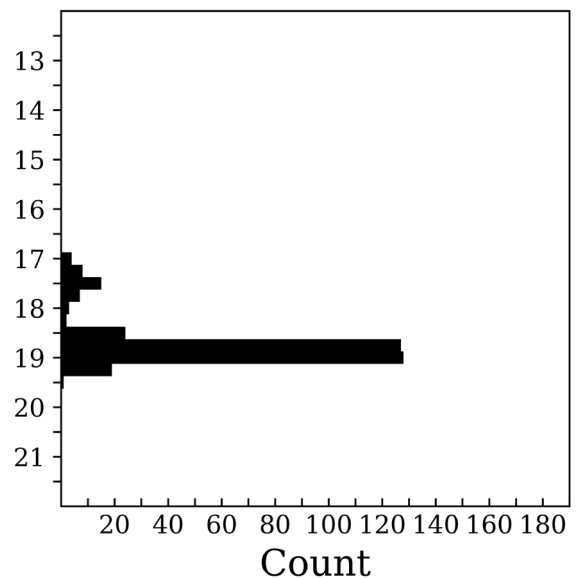
SUMMARY

CRTS PHOTOMETRY

J0837+3830



n = 338



EXTERNAL LINKS



REFERENCES

¹ [Gaia Collaboration et al. \(2018b\): Summary of the contents and survey properties](#)

² [Bailer-Jones et al. 2018, "Estimating Distance from Parallaxes, IV. Distances to 1.33 Billion Stars in Gaia Data Release 2", *ApJ*, Vol. 156, 58](#)

³ [HEASARC Skyview: ROSAT All-Sky](#)

⁴