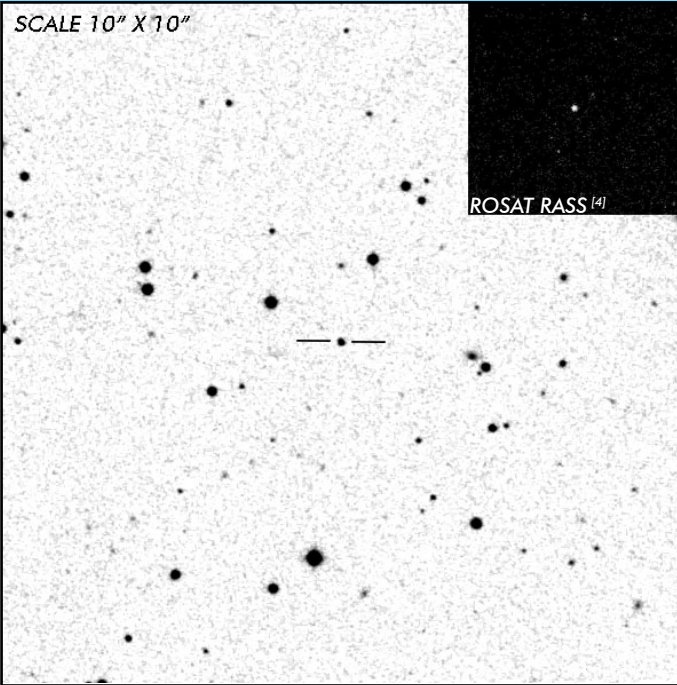


GG Leo

Long Period Polar

OBSERVATION DATA

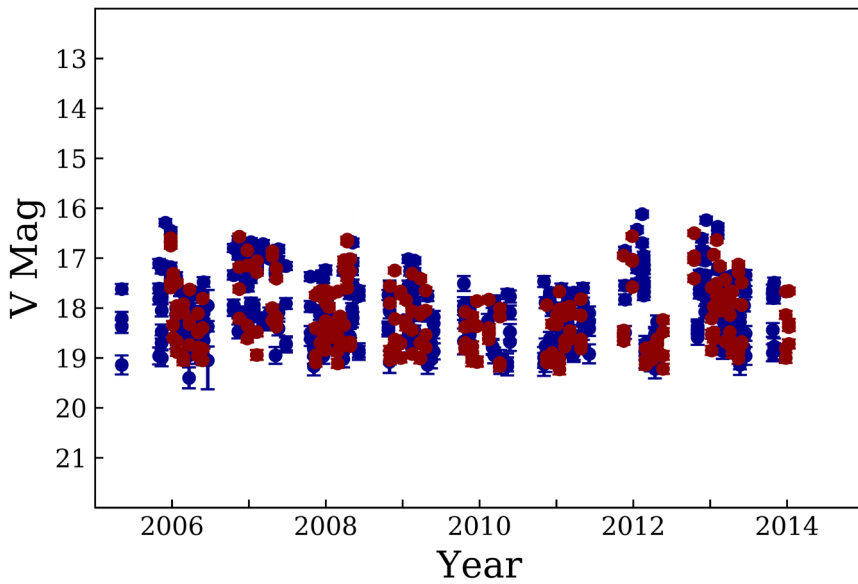


OTHER NAME(S): RX J1007.5-2017; 1RXS J100734.4-201731; RBS0842			
FOUND: ROSAT RBSC 1997			
RIGHT ASCENSION ^[1]	10 ^h 15 ^m 34.68 ^s	DECLINATION ^[1]	+09° 04' 41.99"
PARALLAXES (mas) ^[1]	3.874 ± 0.138	DISTANCE (pc) ^[2]	258.069
DISTANCE BOUNDARIES (pc) ^[2]		Lower = 248.196	Upper = 269.30
MAGNETIC FIELD (MG) ^[3]	B ₍₁₎ = 23	WD MASS (e)	1.13
ORBITAL PERIOD & SPIN PERIOD			
DAYS	HOURS	MINUTES	
0.05547	1.3313	79.878	
OPTICAL (CRTS MAGNITUDE)			
V _{HIGH} = 16.25	V _{LOW} = 19.25	V _(MODE 1) = 18.75	...
OTHER INFORMATION			

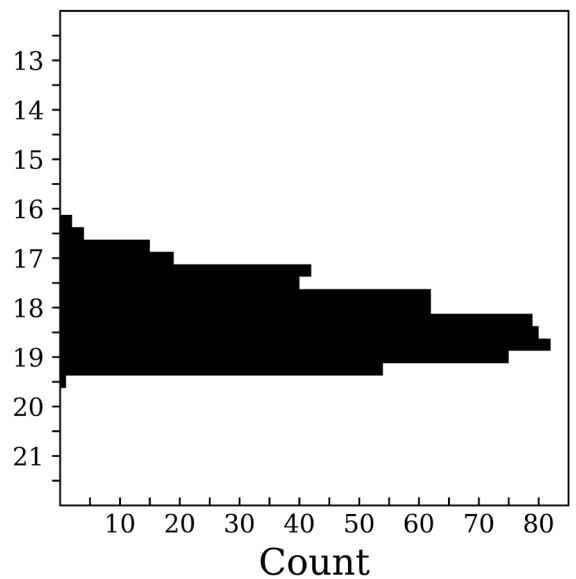
SUMMARY

CRTS PHOTOMETRY

GG Leo



n = 617



EXTERNAL LINKS



REFERENCES

- ¹ [Gaia Collaboration et al. \(2018b\): Summary of the contents and survey properties](#)
- ² [Bailor-Jones et al. 2018, "Estimating Distance from Parallaxes, IV. Distances to 1.3 Billion Stars in Gaia Data Release 2", *ApJ*, Vol. 156, 58](#)
- ³ [Ferrario, Lilia et al. 2015, "Magnetic White Dwarfs", *SSRv* 191, 111-169](#)
- ⁴ [HEASARC Skyview: ROSAT All-Sky](#)
- ⁵ [Sparks, Warren M. et al. 2021, "Nova-produced Common Envelope: Source of the Nonsolar Abundances and an Additional Frictional Angular Momentum Loss in Cataclysmic Variables", *ApJ*, Vol. 914, Iss. 1. id. 5, pp. 16](#)
- ⁶ [Burwitz, V. et al. 1998, "A new ROSAT discovered polar near the lower period limit: RX J1015.5+0904 in Leonis", *A&A*, Vol. 331, p. 262-270](#)
- ⁷ [Bonnet-Bidaud, J. M. et al. 2015, "Quasi-periodic oscillations in accreting magnetic white dwarfs. I. Observational constraints in X-ray and optical", *A&A*, Vol. 579, id.A24, pp. 18](#)
- ⁸ [Ramsay, Gavin et al. 2004, "XMM-Newton observations of three short-period polars: V347 Pav. GG Leo and EU UMa", *MNRAS*, Vol. 347, Iss. 1, pp. 95-100](#)
- ⁹

10