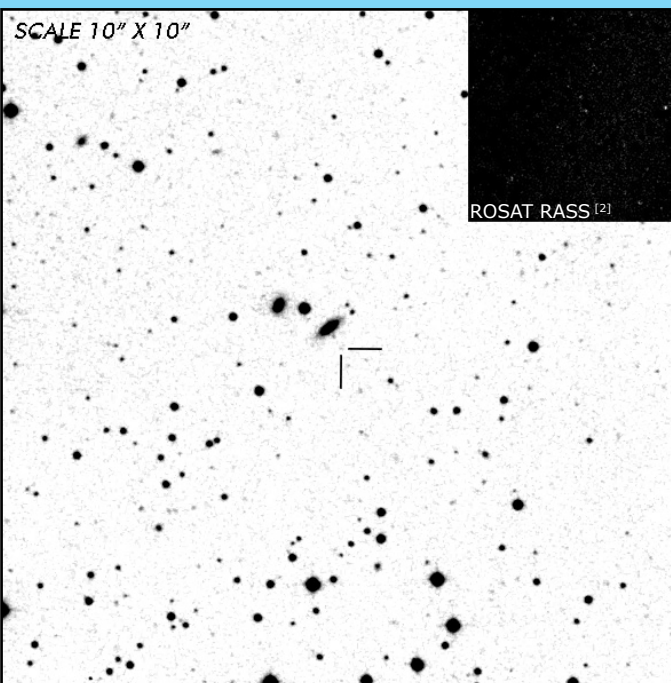


J0257+3337

Short Period Polar

OBSERVATION DATA



OTHER NAME(S): SDSS J025737.74+333750.5; J0257+3337			
FOUND: ROSAT RBSC 2000			
RIGHT ASCENSION ^[1]	02 ^h 57 ^m 37.750 ^s	DECLINATION ^[1]	+33° 37' 50.524"
PARALLAXES (<i>mas</i>)	1.406 ± 0.223	DISTANCE (<i>pc</i>) ^[1]	736.943
DISTANCE BOUNDARIES (<i>pc</i>)		Lower = 648.451	Upper = 867.969
MAGNETIC FIELD (<i>MG</i>)		...	WD MASS (<i>M_⊙</i>) ...
ORBITAL PERIOD & SPIN PERIOD			
DAYS	HOURS	MINUTES ^[3]	
0.06251	1.5002	90.0115	
OPTICAL (CRTS MAGNITUDE)			
...
OTHER INFORMATION			

SUMMARY

EXTERNAL LINKS



REFERENCES

¹ Gaia Collaboration et al. (2018b): Summary of the contents and survey properties

² Bailer-Jones et al. 2018, "Estimating Distance from Parallaxes, IV. Distances to 1.33 Billion Stars in Gaia Data Release 2", *ApJ*, Vol. 156, 58

³ HEASARC Skyview: ROSAT All-Sky

⁴ Vladimirov, V. et al. 2014, "Three Cataclysmic Variables discovered by MASTER", *Astro. Tel.*, No. 5726

⁵