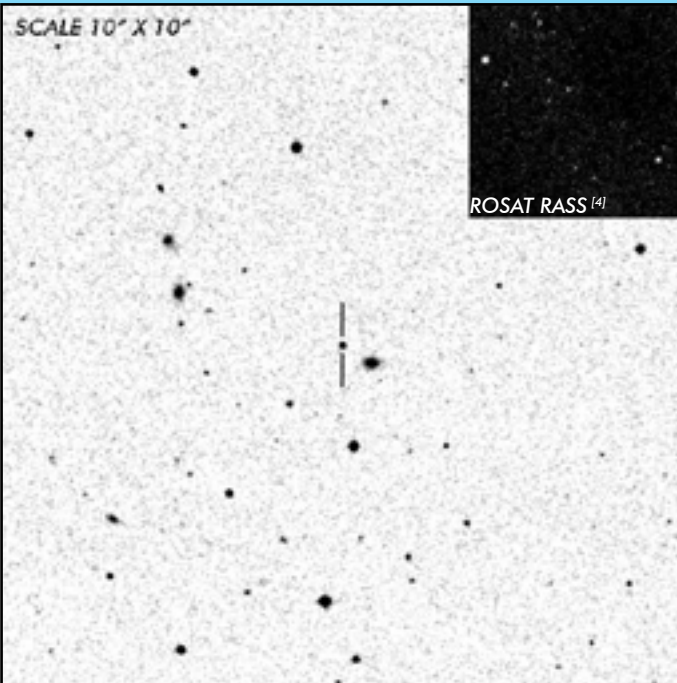




WX LMi

Period Gap
Pre-Polar

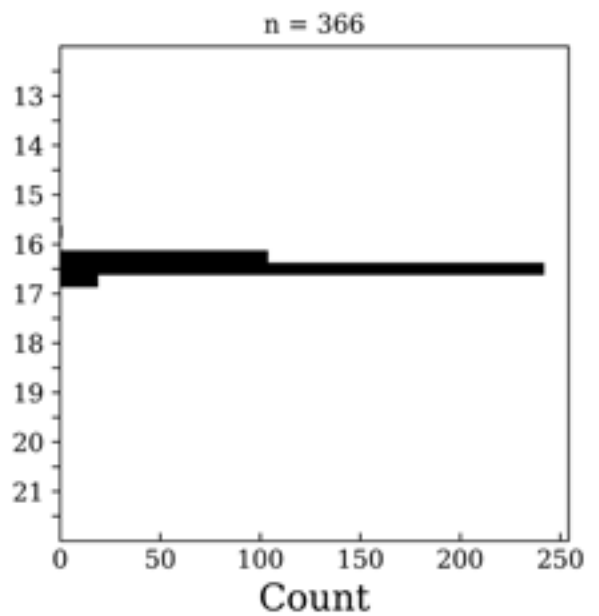
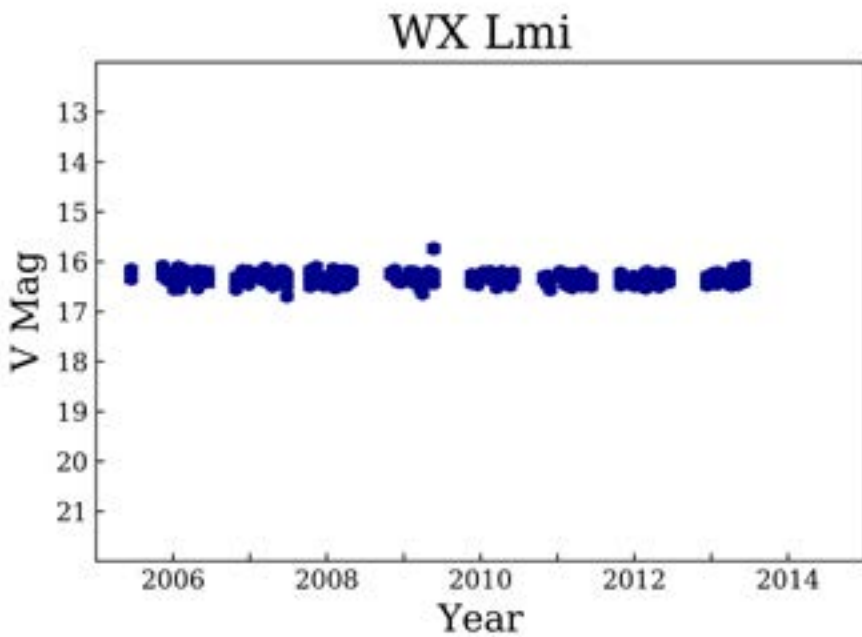
OBSERVATION DATA



OTHER NAME(S): HS 1023+3900; SDSS J102627.48+384502.4			
FOUND: HS			
RIGHT ASCENSION ^[1]	10 ^h 26 ^m 27.49 ^s	DECLINATION ^[1]	+38° 45' 02.65"
PARALLAXES (mas) ^[1]	10.15 ± 0.10	DISTANCE (pc) ^[2]	98.3
DISTANCE BOUNDARIES (pc) ^[2]		Lower = 97.31	Upper = 99.28
MAGNETIC FIELD (MG) ^[3]		B ₍₁₎ = 61	B ₍₂₎ = 70
ORBITAL PERIOD & SPIN PERIOD			
DAYS	HOURS	MINUTES	
0.11592	2.7822	166.931	
OPTICAL (CRTS MAGNITUDE)			
V _{HIGH} = 16.25	V _{LOW} = 16.75	V _(MODE 1) = 16.5	...
OTHER INFORMATION			

SUMMARY

CRTS PHOTOMETRY



EXTERNAL LINKS



REFERENCES

- ¹ [Gaia Collaboration et al. \(2018b\): Summary of the contents and survey properties](#)
- ² [Bailor-Jones et al. 2018, "Estimating Distance from Parallaxes, IV. Distances to 1.3 Billion Stars in Gaia Data Release 2", *ApJ*, Vol. 156, 58](#)
- ³ [Ferrario, Lilia et al. 2015, "Magnetic White Dwarfs", *SSRv* 191, 111-169](#)
- ⁴ [HEASARC Skyview: ROSAT All-Sky](#)
- ⁵