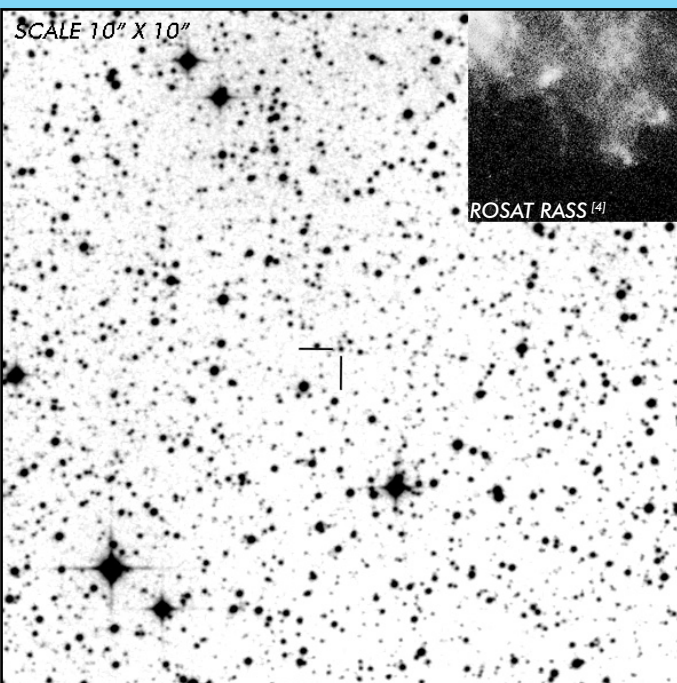


J0838-4831

Long Period
Intermediate Polar

OBSERVATION DATA



OTHER NAME(S): PBC J0838.3+4837; RX J0838.3+4838					
FOUND: ROSAT 2009					
RIGHT ASCENSION ^[1]		08 ^h 38 ^m 49.11 ^s		DECLINATION ^[1]	
				+48° 31' 24.82"	
PARALLAXES (mas) ^[1]		0.461 ± 0.060		DISTANCE (pc) ^[2]	
				2064.176	
DISTANCE BOUNDARIES (pc) ^[2]			Lower = 1823.678		Upper = 2375.344
MAGNETIC FIELD (MG)		
ORBITAL PERIOD (P_o) ^[3]			SPIN PERIOD (P_s) ^[3]		
DAYS	HOURS	MINUTES	HOURS	MINUTES	SECONDS
0.3333	8.000	480	0.4113	24.68	1480.8
OPTICAL (CRTS MAGNITUDE)					
...		
OTHER INFORMATION					

SUMMARY

EXTERNAL LINKS



REFERENCES

- ¹ Gaia Collaboration et al. (2018b): Summary of the contents and survey properties
- ² Bailor-Jones et al. 2018, "Estimating Distance from Parallaxes, IV. Distances to 1.3 Billion Stars in Gaia Data Release 2", *ApJ*, Vol. 156, 58
- ³ Koji, Mukai 2014, *The Catalog of IPs and IP Candidates by Right Ascension*
- ⁴ HEASARC Skyview: ROSAT All-Sky
- ⁵