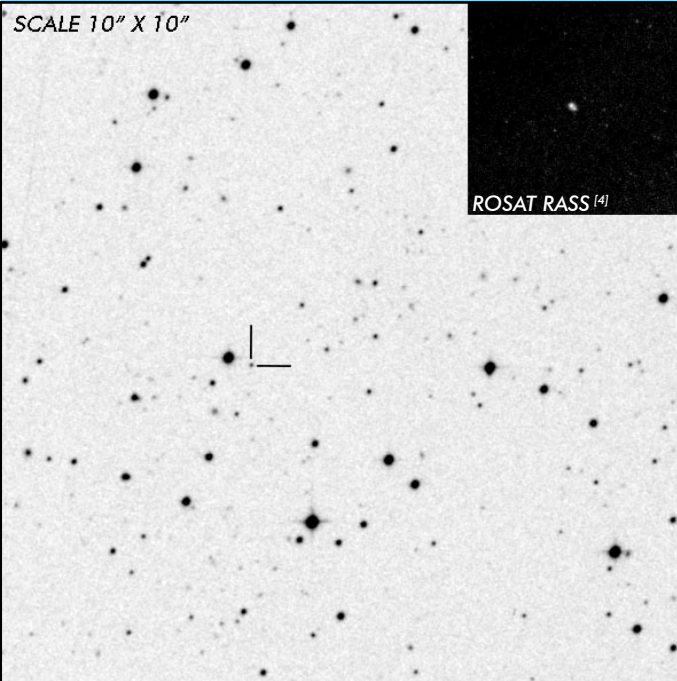


J0425-5714

Short Period Polar

OBSERVATION DATA

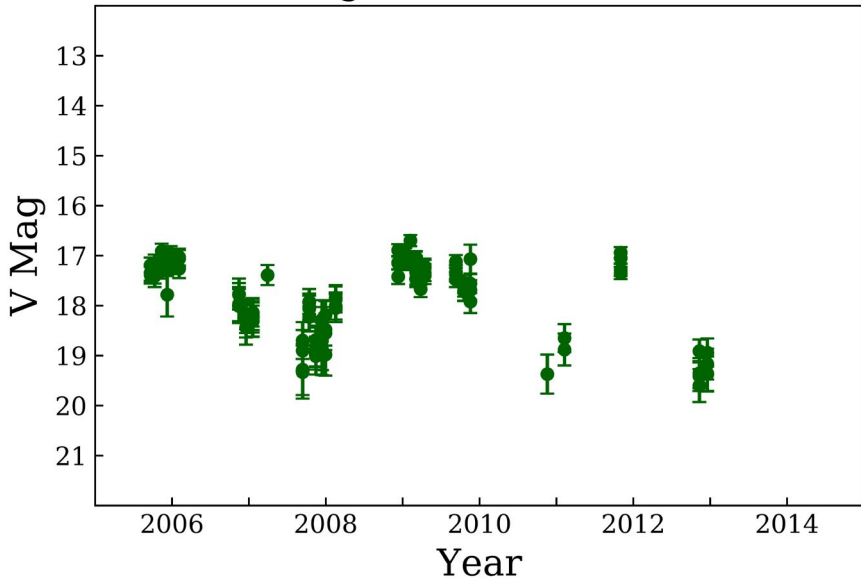


OTHER NAME(S): EUVE J0425.6-5714; Dor; RX J0425.6-5714			
FOUND: EUVE 1998			
RIGHT ASCENSION ^[1]	04 ^h 25 ^m 38.61 ^s	DECLINATION ^[1]	-57° 14' 36.21"
PARALLAXES (mas) ^[1]	1.77 ± 0.07	DISTANCE (pc) ^[2]	556.0
DISTANCE BOUNDARIES (pc) ^[2]		Lower = 533.74	Upper = 580.25
MAGNETIC FIELD (MG) ^[3]		B _(1,2) > 50
ORBITAL PERIOD & SPIN PERIOD			
DAYS	HOURS	MINUTES	
0.05960	1.4304	85.821	
OPTICAL (CRTS MAGNITUDE)			
V _{HIGH} = 16.75	V _{LOW} = 19.75	V ₍₁₎ = 17.25	...
OTHER INFORMATION			

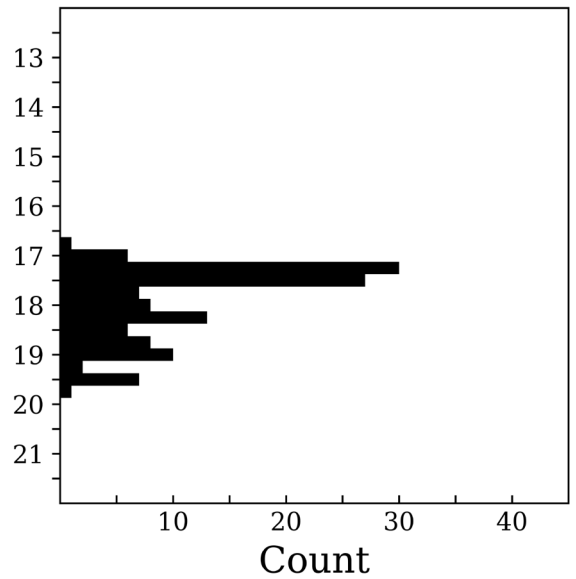
SUMMARY

CRTS PHOTOMETRY

J0425-5714



n = 126



EXTERNAL LINKS



REFERENCES

¹ [Gaia Collaboration et al. \(2018b\): Summary of the contents and survey properties](#)

² [Bailer-Jones et al. 2018, "Estimating Distance from Parallaxes, IV. Distances to 1.33 Billion Stars in Gaia Release 2", *ApJ*, Vol. 156, 58](#)

³ [Ferrario, Lilia, et al. 2015, "Magnetic White Dwarfs", *SSRv* 191, 111-169](#)

⁴ [HEASARC Skyview: ROSAT All-Sky](#)

⁵