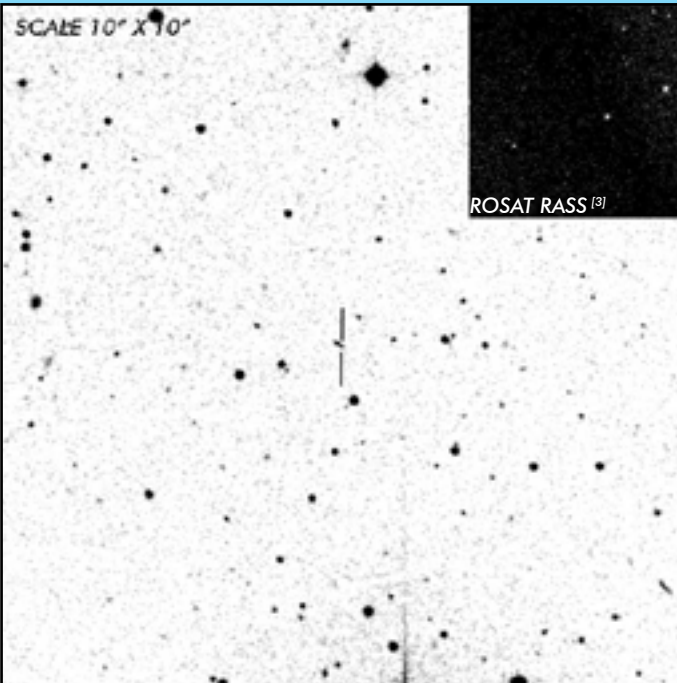




J1312+1736

Eclipsing Short
Period Polar

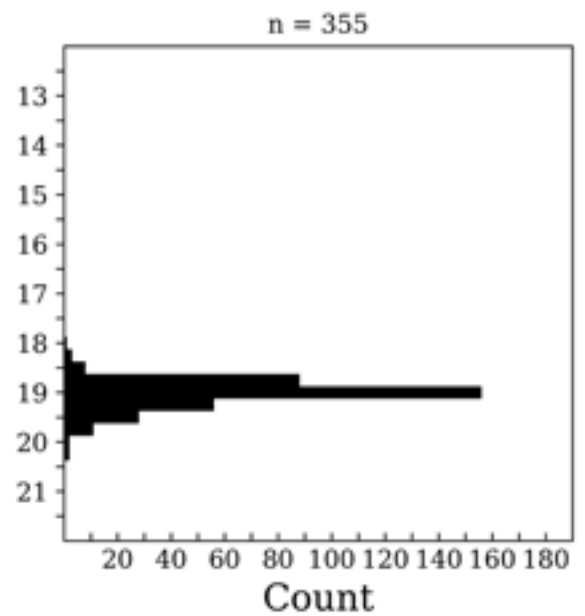
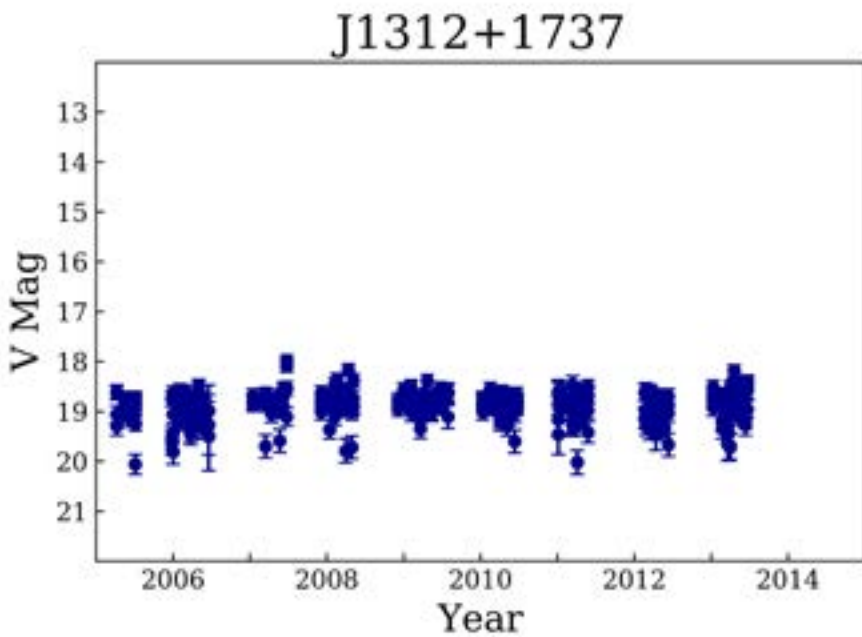
OBSERVATION DATA



OTHER NAME(S): 2XMMp J131223.4+173659; SDSS J131223.48+173659.1			
FOUND: XMM 2008			
RIGHT ASCENSION ^[1]	13 ^h 12 ^m 23.48 ^s	DECLINATION ^[1]	+17° 36' 59.21"
PARALLAXES (mas) ^[1]	1.85 ± 0.54	DISTANCE (pc) ^[2]	574.6
DISTANCE BOUNDARIES (pc) ^[2]		Lower = 409.51	Upper = 929.24
MAGNETIC FIELD (MG)			
...			
ORBITAL PERIOD & SPIN PERIOD			
DAYS		HOURS	
0.06379		1.5308	
91.850			
OPTICAL (CRTS MAGNITUDE)			
V _{HIGH} = 18.25	V _{LOW} = 20	V _(MODE 1) = 19	...
OTHER INFORMATION			

SUMMARY

CRTS PHOTOMETRY



EXTERNAL LINKS



REFERENCES

- ¹ [Gaia Collaboration et al. \(2018b\): Summary of the contents and survey properties](#)
- ² [Bailor-Jones et al. 2018, "Estimating Distance from Parallaxes, IV. Distances to 1.3 Billion Stars in Gaia Data Release 2", *ApJ*, Vol. 156, 58](#)
- ³ [HEASARC Skyview: ROSAT All-Sky](#)
- ⁴