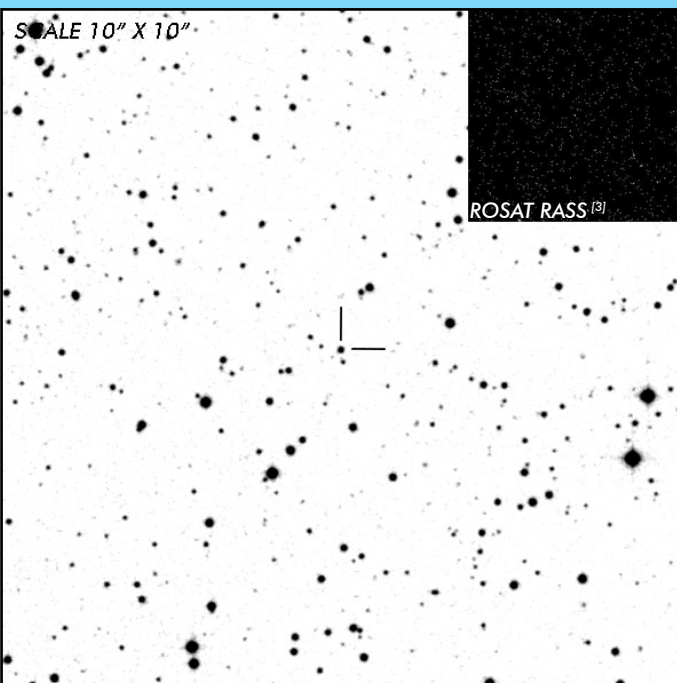


V647 Aur

Long Period Intermediate Polar

OBSERVATION DATA

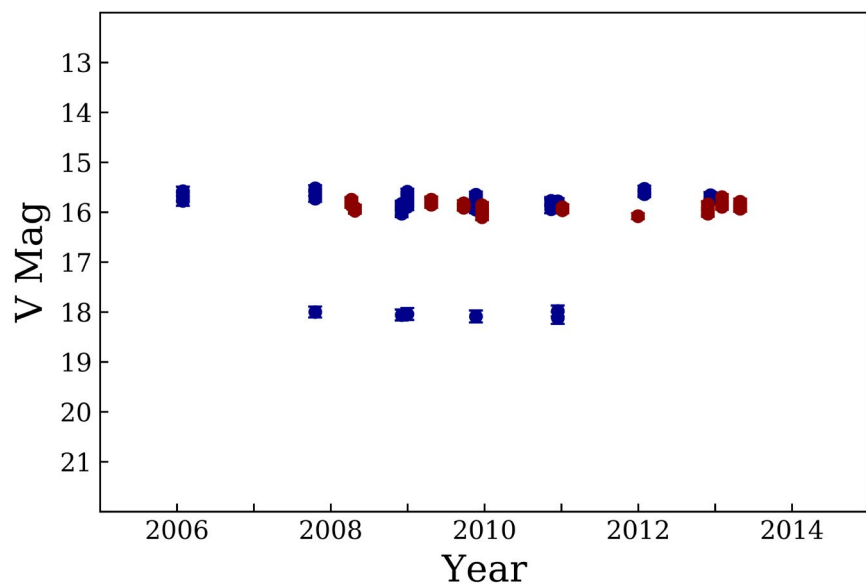


OTHER NAME(S): 1RXS J063631.9+353537; SWIFT J0636.6+3536					
FOUND: ROSAT 2005					
RIGHT ASCENSION ^[1]		06 ^h 36 ^m 32.5 ^s		DECLINATION ^[1]	
				+35° 35' 43"	
PARALLAXES (mas) ^[2]		0.444 ± 0.067		DISTANCE (pc) ^[3]	
				2072.727	
DISTANCE BOUNDARIES (pc) ^[3]			Lower = 2180.516		Upper = 2412.049
MAGNETIC FIELD (MG)		
ORBITAL PERIOD (P _o) ^[4]			SPIN PERIOD (P _s) ^[4]		
DAYS	HOURS	MINUTES	HOURS	MINUTES	SECONDS
0.1444	3.465	207.9	0.259138	15.5483	932.9
OPTICAL (CRTS MAGNITUDE)					
V _{HIGH} = 15.75		V _{LOW} = 18.25		V ₍₁₎ = 16	V ₍₂₎ = 18.25
OTHER INFORMATION					

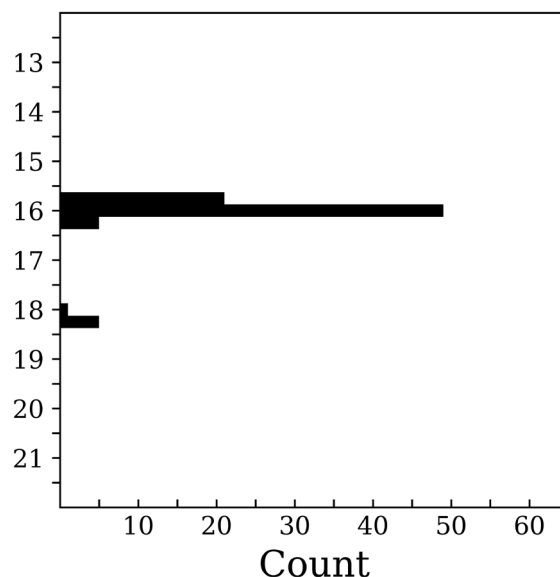
SUMMARY

CRTS PHOTOMETRY

V647 Aur



n = 81



EXTERNAL LINKS



REFERENCES

- ¹ [Samus N.N. et al. 2003, "An electronic version of the second volume of the General Catalogue of Variable Stars with improved coordinates.", *AstL*, 29, 468S](#)
- ² [Gaia Collaboration et al. \(2018b\): Summary of the contents and survey properties](#)
- ³ [HEASARC Skyview: ROSAT All-Sky](#)
- ⁴ [Koji, Mukai 2014, *The Catalog of IPs and IP Candidates by Right Ascension*](#)
- ⁵