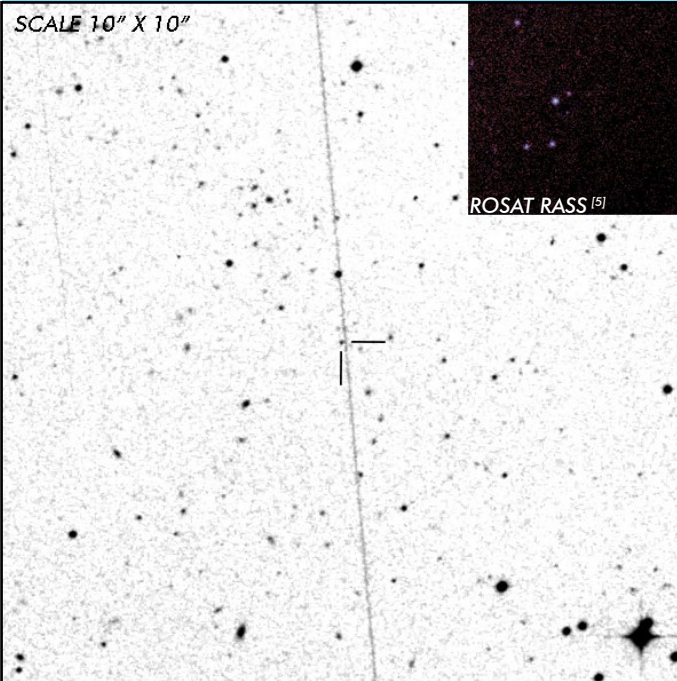


WW Hor

Short Period Eclipsing Polar

OBSERVATION DATA



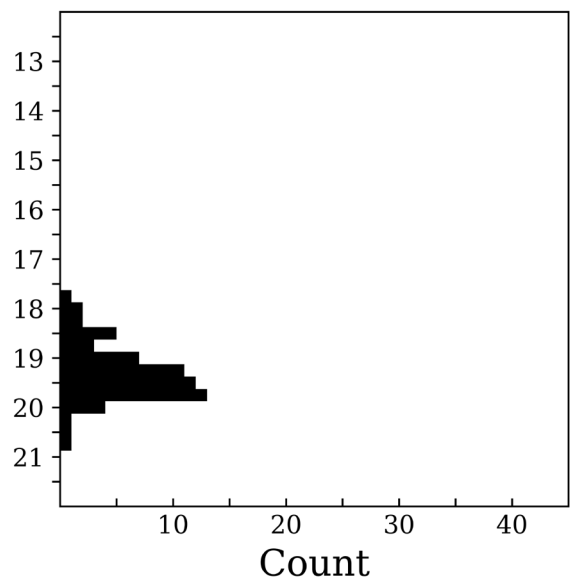
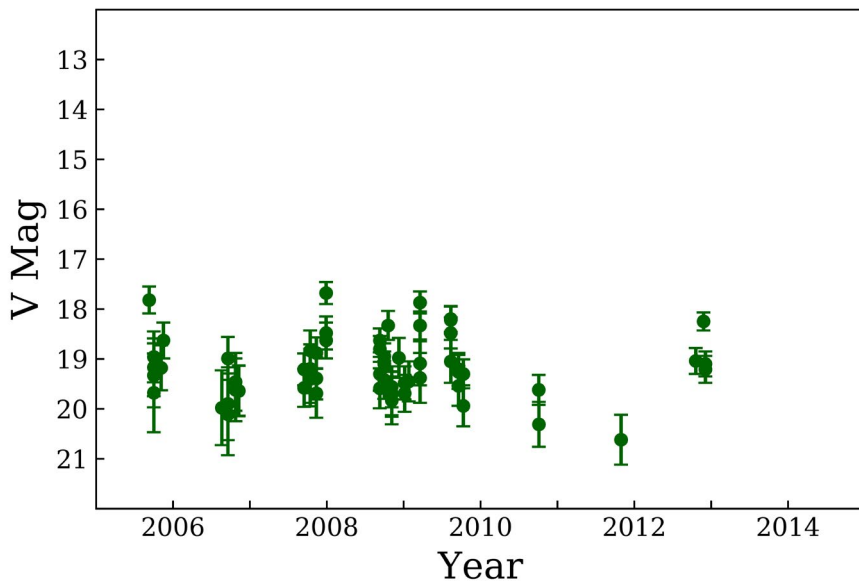
OTHER NAME(S): EXO 023432-5232.3; 1RXS J023610.9-521910			
FOUND: EXOSAT 1986			
RIGHT ASCENSION ^[1]	02 ^h 36 ^m 11.45 ^s	DECLINATION ^[1]	-52° 19' 13.5"
PARALLAXES (mas) ^[2]	3.07 ± 0.29	DISTANCE (pc) ^[3]	326.2
DISTANCE BOUNDARIES (pc) ^[3]		Lower = 296.72	Upper = 361.95
MAGNETIC FIELD (MG) ^[4]		B ₍₁₎ = 25
ORBITAL PERIOD & SPIN PERIOD			
DAYS	HOURS	MINUTES	
0.08020	1.9248	115.487	
OPTICAL (CRTS MAGNITUDE)			
V _{HIGH} = 17.75	V _{LOW} = 20.75	V _(MODE 1) = 19.75	...
OTHER INFORMATION			

SUMMARY

CRTS PHOTOMETRY

WW Hor

n = 63



EXTERNAL LINKS



REFERENCES

- ¹ [Downes, R., et al. 1997, "A Catalog and Atlas of Catalysmic Variables - Second Edition", *PASP* 109, 345-439](#)
- ² [Gaia Collaboration et al. 2018b: "Summary of the Contents and Survey Properties"](#)
- ³ [Bailer-Jones et al. 2018, "Estimating Distance from Parallaxes, IV. Distances to 1.33 Billion Stars in Gaia Data Release 2", *ApJ*, Vol. 156, 58](#)
- ⁴ [Ferrario, Lilia, et al. 2015, "Magnetic White Dwarfs", *SSRv* 191, 111-169](#)
- ⁵ [HEASARC Skyview: ROSAT All-Sky](#)
- ⁶