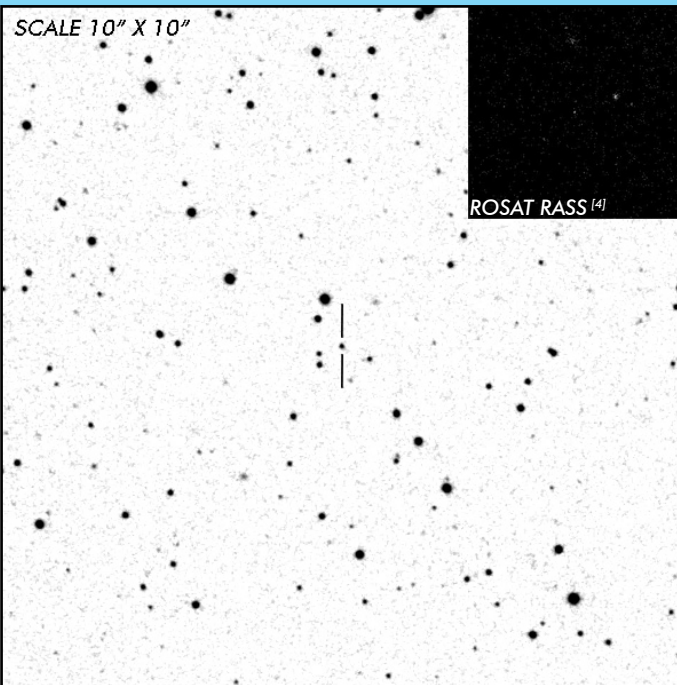


LW Cam

Short Period Polar

OBSERVATION DATA

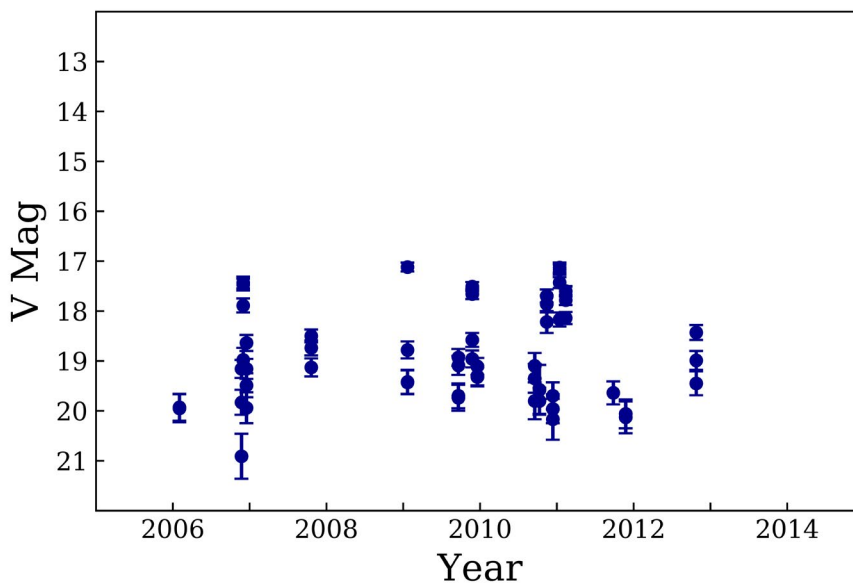


| | | | |
|--|--|-------------------------------------|-----------------|
| OTHER NAME(S): RX J0704.2+6203; 1RXS J070409.2+620330 | | | |
| FOUND: ROSAT RASS | | | |
| RIGHT ASCENSION ^[1] | 07 ^h 04 ^m 10.03 ^s | DECLINATION ^[1] | +62° 03' 27.95" |
| PARALLAXES (mas) ^[1] | 1.85 ± 0.14 | DISTANCE (pc) ^[2] | 535.7 |
| DISTANCE BOUNDARIES (pc) ^[2] | | Lower = 497.90 | Upper = 579.46 |
| MAGNETIC FIELD (MG) ^[3] | | B ₍₁₎ = 20 | |
| ORBITAL PERIOD & SPIN PERIOD | | | |
| DAYS | HOURS | MINUTES | |
| 0.06755 | 1.6211 | 97.268 | |
| OPTICAL (CRTS MAGNITUDE) | | | |
| V _{HIGH} = 17.25 | V _{LOW} = 20.25 | V ₍₁₎ = 19.5 | ... |
| OTHER INFORMATION | | | |
| | | | |
| | | | |
| | | | |

SUMMARY

CRTS PHOTOMETRY

LW Cam



EXTERNAL LINKS



REFERENCES

- ¹ [Gaia Collaboration et al. \(2018b\): Summary of the contents and survey properties](#)
- ² [Bailer-Jones et al. 2018, "Estimating Distance from Parallaxes, IV. Distances to 1.33 Billion Stars in Gaia Data Release 2", ApJ, Vol. 156, 58](#)
- ³ [Ferrario, Lilia, et al. 2015, "Magnetic White Dwarfs", SSRv 191, 111-169](#)
- ⁴ [HEASARC Skyview: ROSAT All-Sky](#)
- ⁵