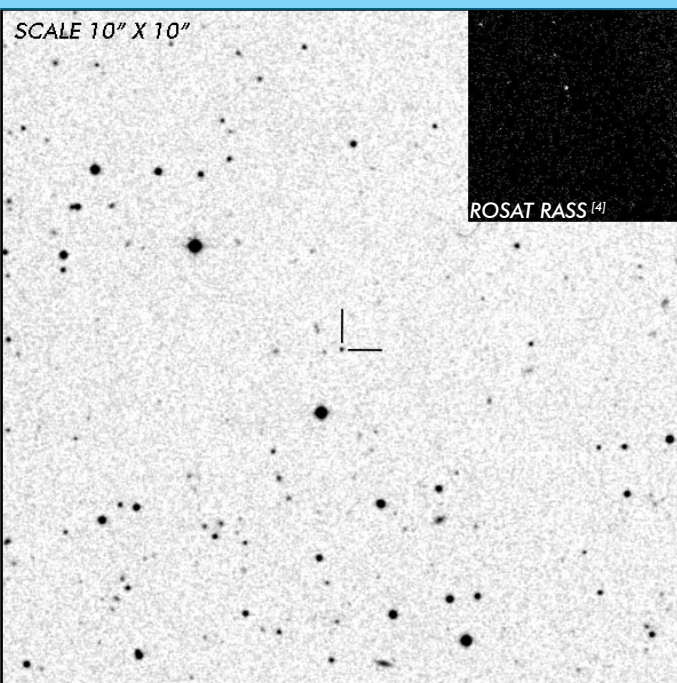


J0846+2453

Long Period
Asynchronous Polar

OBSERVATION DATA



OTHER NAME(S): SDSS J084617.11+245344.1; CRTS J084617.1+245343					
FOUND: SDSS 2006					
RIGHT ASCENSION ^[1]		08 ^h 46 ^m 17.11 ^s	DECLINATION ^[1]		+24° 53' 44.09"
PARALLAXES (mas)		0.847 ± 0.250	DISTANCE (pc)		1232.489
DISTANCE BOUNDARIES (pc)			Lower = 947.007	Upper = 2028.97	
MAGNETIC FIELD (MG)			...		
ORBITAL PERIOD (P _o)			SPIN PERIOD (P _s)		
DAYS	HOURS	MINUTES	HOURS	MINUTES	SECONDS
0.19333	4.6400	278.4	4.510	270.605	16236.3
OPTICAL (CRTS MAGNITUDE)					
...		
OTHER INFORMATION					

SUMMARY

EXTERNAL LINKS



REFERENCES

¹ Gaia Collaboration et al. (2018b): Summary of the contents and survey properties

² HEASARC Skyview: ROSAT All-Sky

³