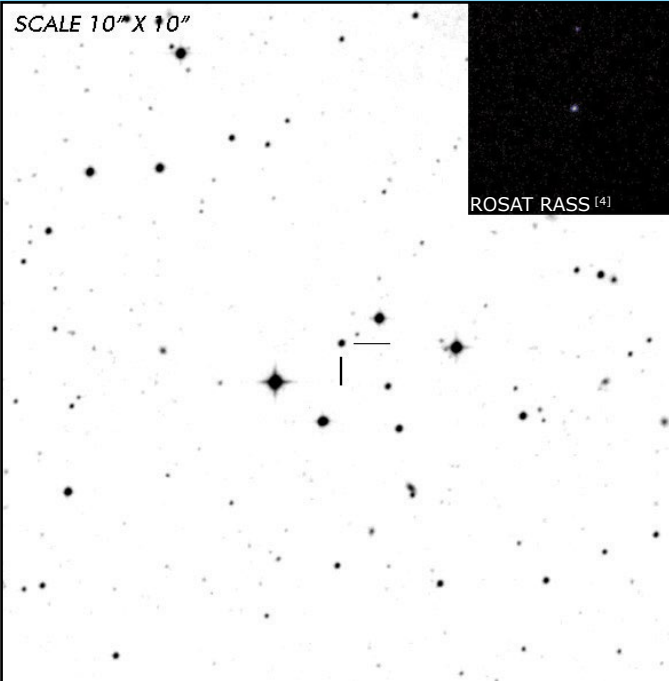




# BL Hyi

## Short Period Polar

### OBSERVATION DATA



<b>OTHER NAME(S):</b> H 0139-68, 2 EUVE J0140-67.8			
<b>FOUND:</b> HEAO 1982			
<b>RIGHT ASCENSION</b> <sup>[1]</sup>	01 <sup>h</sup> 41 <sup>m</sup> 0.400 <sup>s</sup>	<b>DECLINATION</b> <sup>[1]</sup>	-67° 53' 27.470"
<b>PARALLAXES (mas)</b> <sup>[1]</sup>	7.716 ± 0.051	<b>DISTANCE (pc)</b> <sup>[2]</sup>	129.287
<b>DISTANCE BOUNDARIES (pc)</b> <sup>[2]</sup>		Lower = 128.464	Upper = 130.119
<b>MAGNETIC FIELD (MG)</b> <sup>[3, 5]</sup>		B <sub>(1)</sub> = 23	B <sub>zee</sub> = 21    B <sub>zeem</sub> = 12
<b>WD MASS (M<sub>⊙</sub>)</b> <sup>[5]</sup>	0.71		
<b>ORBITAL PERIOD &amp; SPIN PERIOD</b>			
<b>DAYS</b>	<b>HOURS</b>	<b>MINUTES</b>	
0.07892	1.8940	113.638	
<b>OPTICAL (CRTS MAGNITUDE)</b>			
...	...	...	...
<b>OTHER INFORMATION</b>			
<b>TEMP<sub>EFF</sub> (K)</b> <sup>[6]</sup>	13,300		

### SUMMARY

### EXTERNAL LINKS



### REFERENCES

- <sup>1</sup> Gaia Collaboration et al. (2018b): [Summary of the contents and survey properties](#)
- <sup>2</sup> Bailer-Jones et al. 2018, "Estimating Distance from Parallaxes. IV. Distances to 1.33 Billion Stars in Gaia Data Release 2", *ApJ*, Vol. 156, 58
- <sup>3</sup> Ferrario, L. et al. 1996, "The magnetic fields of EF Eridani and BL Hydri", *MNRAS*, 282, 218-222
- <sup>4</sup> HEASARC Skyview: [ROSAT All-Sky](#)
- <sup>5</sup> Schwobe, A.D. et al 1995, "Magnetism in the polar BL Hydri", *A&A*, 301, 447-455.
- <sup>6</sup> Araujo-Betancor, S. et al 2005, "Far-ultraviolet Spectroscopy of Magnetic Cataclysmic Variables ", *ApJ*, 622, 589-601
- <sup>7</sup> Visvanathan, N. et al. 1982, "Optical Identification of X-Ray Source H0139-68 with an AM Herculis-type System", *Nature*, Vol. 298, pp. 41-44
- <sup>8</sup> Wolff, Michael T. et al. 1999, "X-Ray and Optical Observations of BL Hydri", *ApJ*, Vol. 526, 435-444
- <sup>9</sup> Ramsay, G., 2000, "Determining the mass of the accreting white dwarf in magnetic cataclysmic variables using RXTE data", *MNRAS*, Vol. 314, pp. 403-408
- <sup>10</sup>