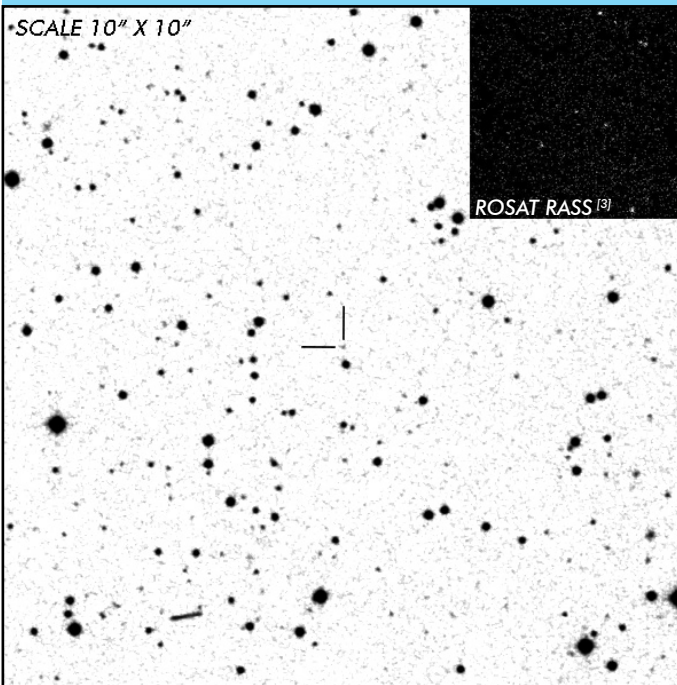


J0733+2619

Long Period Polar

OBSERVATION DATA

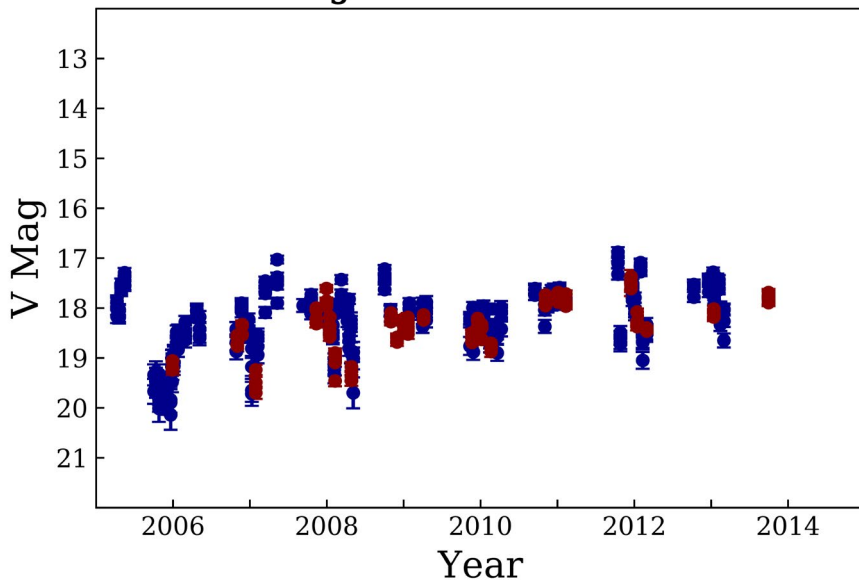


OTHER NAME(S): RXS J073346.0+261933; SDSS J073346.27+261926.2			
FOUND: ROSAT 2009			
RIGHT ASCENSION ^[1]	07 ^h 33 ^m 46.27 ^s	DECLINATION ^[1]	+26° 19' 26.30"
PARALLAXES (mas) ^[1]	0.98 ± 0.22	DISTANCE (pc) ^[2]	988.7
DISTANCE BOUNDARIES (pc) ^[2]		Lower = 802.37	Upper = 1275.54
MAGNETIC FIELD (MG)			
...			
ORBITAL PERIOD & SPIN PERIOD			
DAYS	HOURS	MINUTES	
0.13340	3.2016	192.096	
OPTICAL (CRTS MAGNITUDE)			
V _{HIGH} = 17	V _{LOW} = 20.25	V _(MODE 1) = 18.25	...
OTHER INFORMATION			

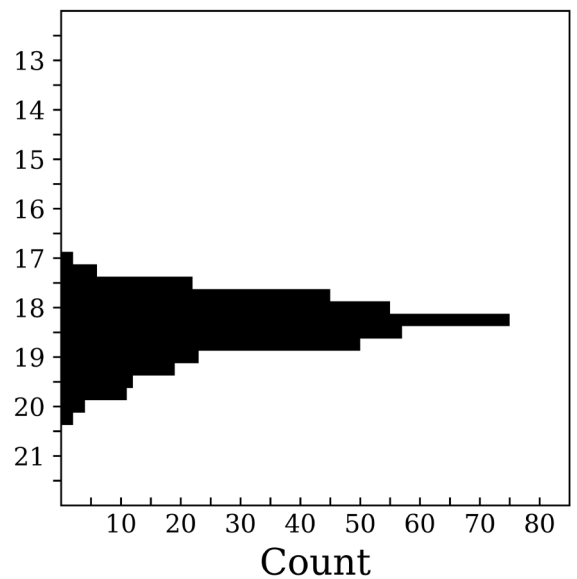
SUMMARY

CRTS PHOTOMETRY

J0733+2619



n = 383



EXTERNAL LINKS



REFERENCES

¹ [Gaia Collaboration et al. \(2018b\): Summary of the contents and survey properties](#)

² [Bailer-Jones et al. 2018, "Estimating Distance from Parallaxes, IV. Distances to 1.33 Billion Stars in Gaia Data Release 2", *ApJ*, Vol. 156, 58](#)

³ [HEASARC Skyview: ROSAT All-Sky](#)

⁴