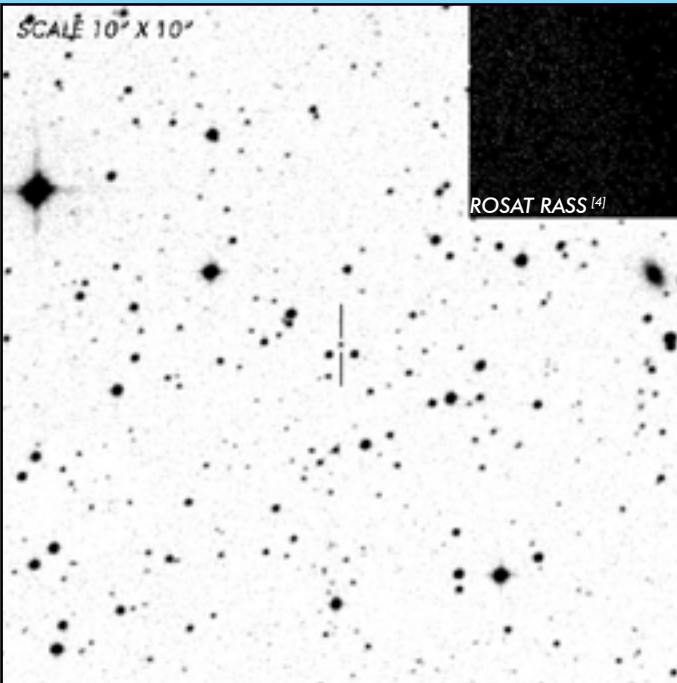




J1503-2207

Period Gap
Polar

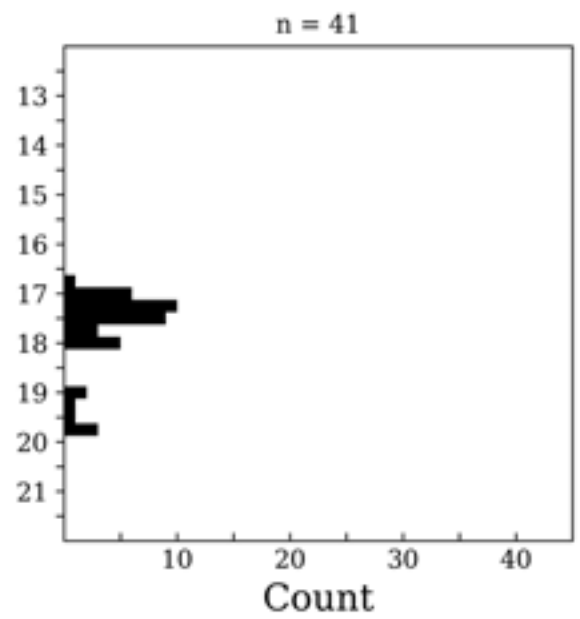
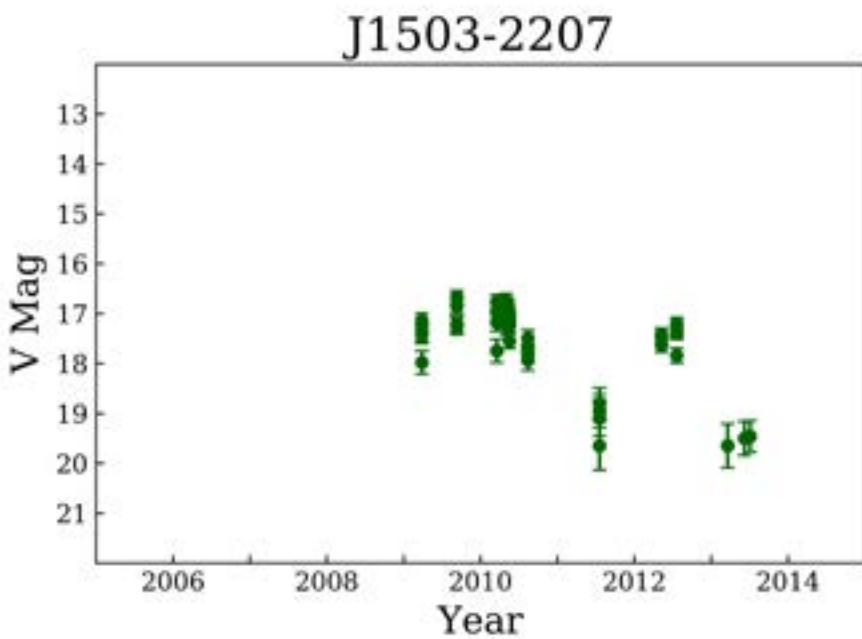
OBSERVATION DATA



OTHER NAME(S): CRTS CSS100216 J150354-220711; CSS J1503-2207			
FOUND: CRTS 2012			
RIGHT ASCENSION ^[1]	15 ^h 03 ^m 53.94 ^s	DECLINATION ^[1]	-22° 07' 11.1"
PARALLAXES (mas) ^[2]	2.55 ± 0.20	DISTANCE (pc) ^[3]	391.5
DISTANCE BOUNDARIES (pc) ^[3]		Lower = 362.61	Upper = 425.42
MAGNETIC FIELD (MG)			
...			
ORBITAL PERIOD & SPIN PERIOD			
DAYS		HOURS	
0.09262		2.2229	
MINUTES		MINUTES	
133.373		133.373	
OPTICAL (CRTS MAGNITUDE)			
V _{HIGH} = 16.75	V _{LOW} = 19.75	V _(MODE 1) = 17.25	...
OTHER INFORMATION			

SUMMARY

CRTS PHOTOMETRY



EXTERNAL LINKS



REFERENCES

- ¹ [Woudt, P. A. et al 2012, "High-speed photometry of faint cataclysmic variables - VII. Targets selected from the Sloan Digital Sky Survey and the Catalina Real-time Transient Survey", *MNRAS*, Vol. 421, 2414W](#)
- ² [Gaia Collaboration et al. \(2018b\): Summary of the contents and survey properties](#)
- ³ [Bailor-Jones et al. 2018, "Estimating Distance from Parallaxes, IV. Distances to 1.3 Billion Stars in Gaia Data Release 2", *ApJ*, Vol. 156, 58](#)
- ⁴ [HEASARC Skyview: ROSAT All-Sky](#)
- ⁵