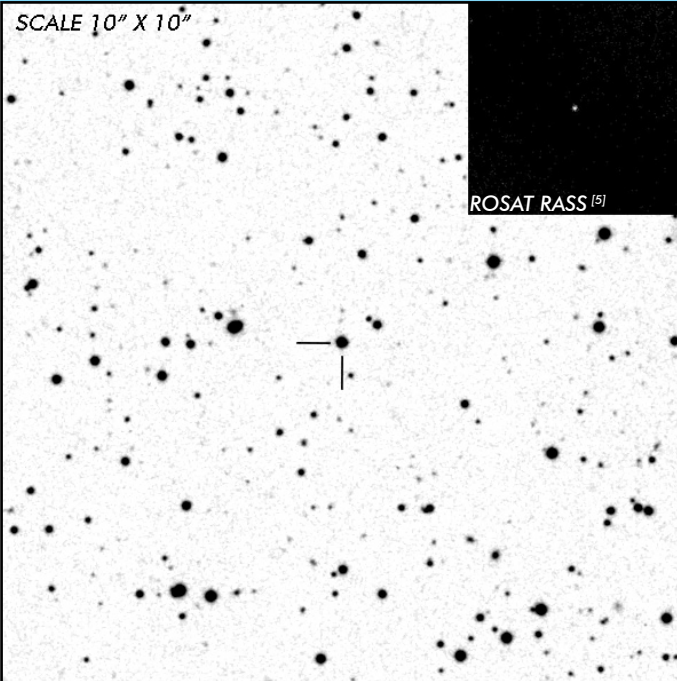


PQ Gem

Transitional Long Period Intermediate Polar

OBSERVATION DATA

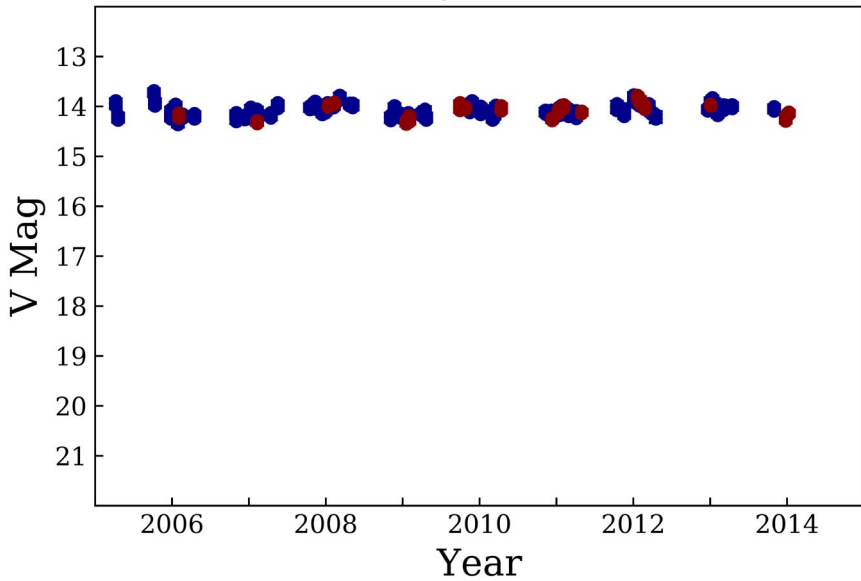


OTHER NAME(S): 1RXS J070407.9+262501; SWIFT J0704.4+2625					
FOUND: ROSAT 1991					
RIGHT ASCENSION ^[1]		07 ^h 51 ^m 17.33 ^s	DECLINATION ^[1]		+14° 44' 23.88"
PARALLAXES (mas) ^[1]		1.306 ± 0.036	DISTANCE (pc) ^[2]		749.606
DISTANCE BOUNDARIES (pc) ^[2]			Lower = 729.737	Upper = 770.565	
MAGNETIC FIELD (MG) ^[3]			B ₍₁₎ = 9	B ₍₂₎ = 21:	
ORBITAL PERIOD (P_o) ^[4]			SPIN PERIOD (P_s) ^[4]		
DAYS	HOURS	MINUTES	HOURS	MINUTES	SECONDS
0.2164	5.193	311.6	0.2315	13.89	2311.0
OPTICAL (CRTS MAGNITUDE)					
...
OTHER INFORMATION					

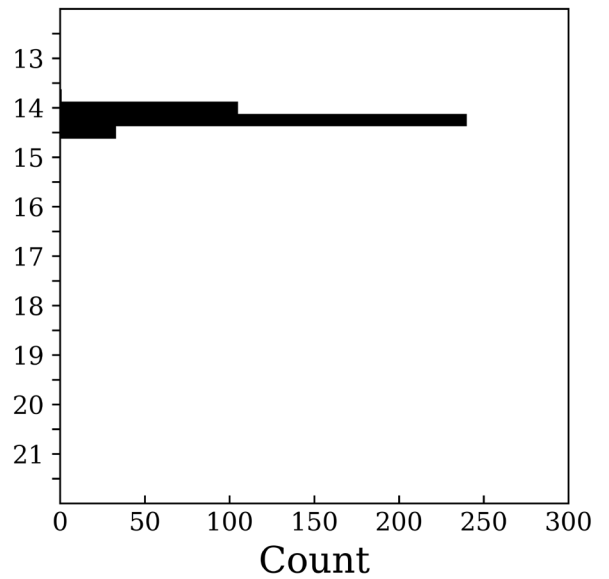
SUMMARY

CRTS PHOTOMETRY

PQ Gem



n = 379



EXTERNAL LINKS



REFERENCES

- ¹ [Gaia Collaboration et al. \(2018b\): Summary of the contents and survey properties](#)
- ² [Bailer-Jones et al. 2018, "Estimating Distance from Parallaxes. IV. Distances to 1.33 Billion Stars in Gaia Data Release 2", *ApJ*, Vol. 156, 58](#)
- ³ [Ferrario, Lilia, et al. 2015, "Magnetic White Dwarfs", *SSRv* 191, 111-169](#)
- ⁴ [Koji, Mukai 2014, *The Catalog of IPs and IP Candidates by Right Ascension*](#)
- ⁵ [HEASARC Skyview: ROSAT All-Sky](#)
- ⁶