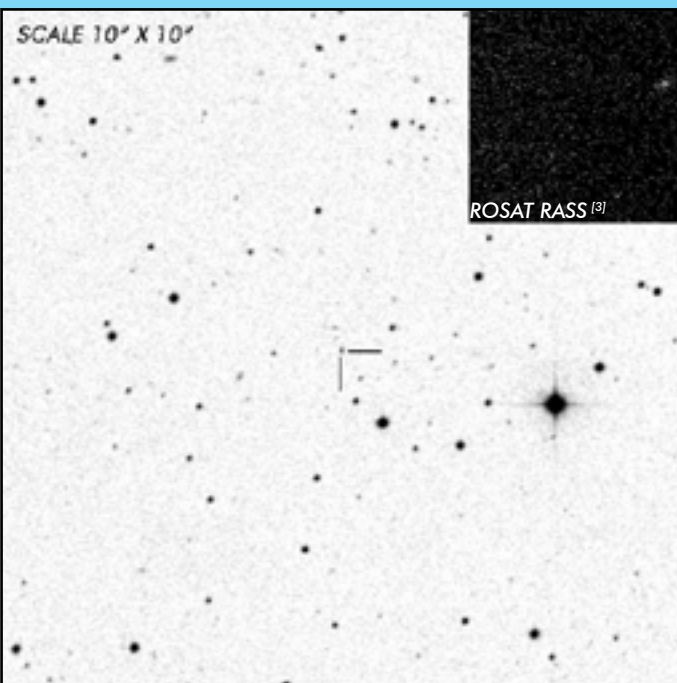




J1446+0253

Long Period
Intermediate Polar

OBSERVATION DATA



OTHER NAME(S): 2XMM J144659.9+025330; SDSS J144659.95+025330.3					
FOUND: 2001					
RIGHT ASCENSION ^[1]		14 ^h 46 ^m 59.96 ^s		DECLINATION ^[1]	
				+02° 53' 30.39"	
PARALLAXES (mas)			...		
DISTANCE (pc)			...		
DISTANCE BOUNDARIES (pc)			...		
MAGNETIC FIELD (MG)			...		
ORBITAL PERIOD (P_o) ^[2]			SPIN PERIOD (P_s) ^[2]		
DAYS	HOURS	MINUTES	HOURS	MINUTES	SECONDS
0.1583	3.8	228	1.2167	48.6667	2920
OPTICAL (CRTS MAGNITUDE)					
...		
OTHER INFORMATION					

SUMMARY

EXTERNAL LINKS



REFERENCES

¹ Gaia Collaboration et al. (2018b): Summary of the contents and survey properties

² Mukai, Koji et al. 2014. "The Catalog of IPs and IP Candidates by Right Ascension"

³ HEASARC Skyview: ROSAT All-Sky

⁴